

p44/42 MAP Kinase(Ab-202) Antibody

Catalog No: #21237



Package Size: #21237-1 50ul #21237-2 100ul #21237-4 25ul

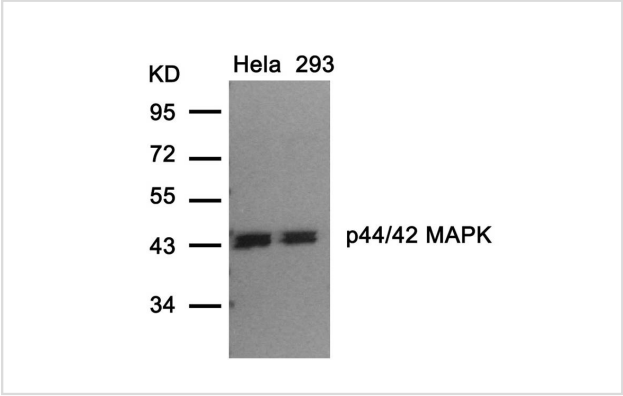
Overview

Product Name	p44/42 MAP Kinase(Ab-202) Antibody
Host Species	Rabbit
Clonality	Polyclonal
Applications	WB IHC
Species Reactivity	Hu Ms Rt
Immunogen Type	Peptide-KLH
Target Name	p44/42 MAP Kinase
Alternative Names	Extracellular signal-regulated kinase 1

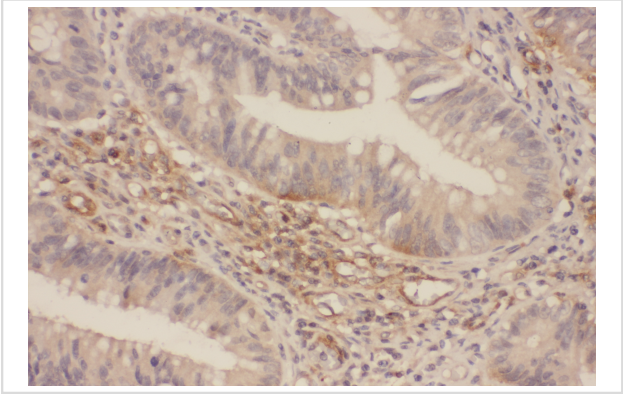
Application Details

Predicted MW: 42 44 kd
Western blotting: 1:500~1:1000
Immunohistochemistry: 1:50~1:100

Images



Western blot analysis of extracts from HeLa and 293 cells using p44/42 MAP Kinase(Ab-202) Antibody #21237.



Immunohistochemical analysis of paraffin-embedded human Colorectal tissue using p44/42 MAP Kinase (Ab-202) Antibody #21237.

Descriptions

Immunogen	Peptide sequence around aa. 200~204 (F-L-T-E-Y) derived from Human p44/42 MAP Kinase.
Specificity	The antibody detects endogenous level of total p44/42 MAP Kinase protein.
Purification	Antibodies were produced by immunizing rabbits with synthetic peptide and KLH conjugates. Antibodies were purified by affinity-chromatography using epitope-specific peptide.
Formulation	Supplied at 1.0mg/mL in phosphate buffered saline (without Mg ²⁺ and Ca ²⁺), pH 7.4, 150mM NaCl, 0.02% sodium azide and 50% glycerol.
Storage	Store at -20°C for long term preservation (recommended). Store at 4°C for short term use.
Accession NO.	Swiss-Prot: P27361NCBI Protein: NP_001035145.1

Related Information

Involved in both the initiation and regulation of meiosis, mitosis, and postmitotic functions in differentiated cells by phosphorylating a number of transcription factors such as ELK-1. Phosphorylates EIF4EBP1; required for initiation of translation. Phosphorylates microtubule-associated protein 2 (MAP2). Phosphorylates SPZ1

TETE HANNKEN, et al. (2000) Am Soc Nephrol 11:1387-1397

Omar D. PerezNature et al. (2002) Biotechnology 20: 155 - 162

Jingui Yu, et al. (2005) Anesth Analg 101: 315-321

Hironobu Ihn et al.(2000) Immunology 165: 2149-2155

Note: This product is for in vitro research use only and is not intended for use in humans or animals.