

CDK6(phospho-Tyr13) Antibody

Catalog No: #11542



Package Size: #11542-1 50ul #11542-2 100ul #11542-4 25ul

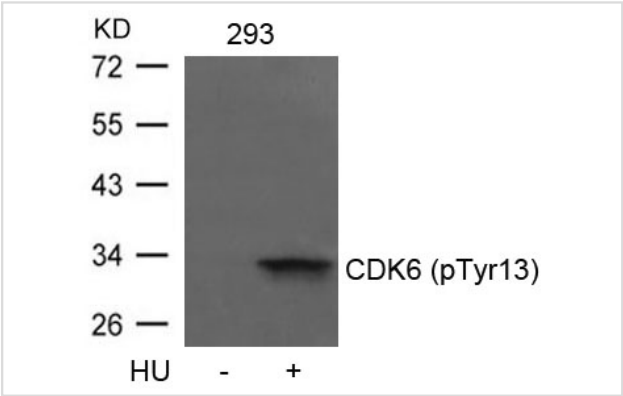
Overview

Product Name	CDK6(phospho-Tyr13) Antibody
Host Species	Rabbit
Clonality	Polyclonal
Applications	WB IHC IF
Species Reactivity	Hu Ms
Immunogen Type	Peptide-KLH
Target Name	CDK6
Modification	Phospho-Tyr13
Alternative Names	Serine/threonine-protein kinase PLSTIRE

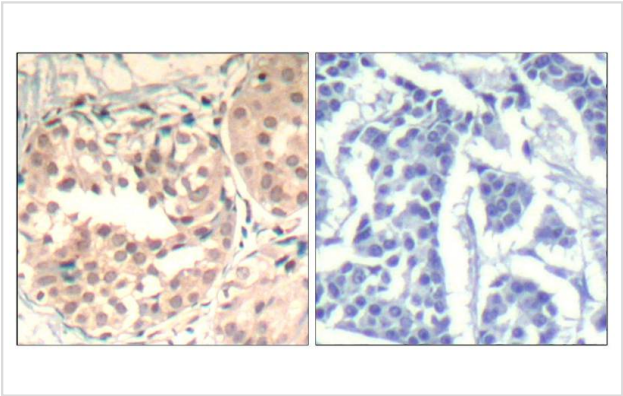
Application Details

Predicted MW: 36kd
Western blotting: 1:500~1:1000
Immunohistochemistry: 1:50~1:100
Immunofluorescence: 1:100~1:200

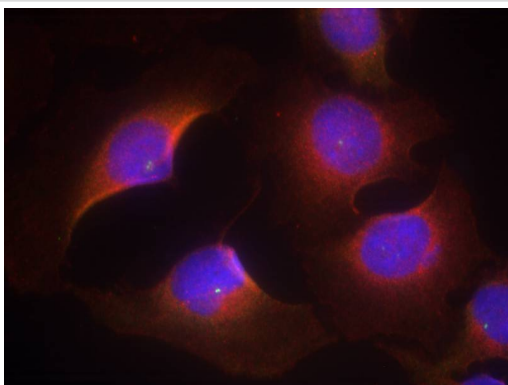
Images



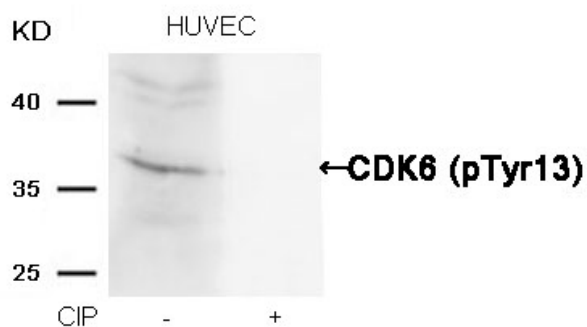
Western blot analysis of extracts from 293 cells untreated or treated with HU using CDK6(phospho-Tyr13) Antibody #11542.



Immunohistochemical analysis of paraffin-embedded human breast carcinoma tissue using CDK6(Phospho-Tyr13) Antibody #11542(left) or the same antibody preincubated with blocking peptide(right).



Immunofluorescence staining of methanol-fixed HeLa cells using CDK6(phospho-Tyr13) Antibody #11542.



Western blot analysis of extracts from HUVEC cells, treated with calf intestinal phosphatase (CIP), using CDK6 (phospho-Tyr13) Antibody #11542.

Descriptions

Immunogen	Peptide sequence around phosphorylation site of tyrosine 13 (Q-Q-Y(p)-E-C) derived from Human CDK6.
Specificity	The antibody detects endogenous level of CDK6 only when phosphorylated at tyrosine 13.
Purification	Antibodies were produced by immunizing rabbits with synthetic phosphopeptide and KLH conjugates. Antibodies were purified by affinity-chromatography using epitope-specific phosphopeptide. Non-phospho specific antibodies were removed by chromatography using non-phosphopeptide.
Formulation	Supplied at 1.0mg/mL in phosphate buffered saline (without Mg ²⁺ and Ca ²⁺), pH 7.4, 150mM NaCl, 0.02% sodium azide and 50% glycerol.
Storage	Store at -20°C for long term preservation (recommended). Store at 4°C for short term use.
Accession NO.	Swiss-Prot: Q00534NCBI Protein: NP_001138778.1

Related Information

Probably involved in the control of the cell cycle. Interacts with D-type G1 cyclins.

Note: This product is for in vitro research use only and is not intended for use in humans or animals.