

cofilin1(phospho-Tyr139) Antibody

Catalog No: #11506



Package Size: #11506-1 50ul #11506-2 100ul #11506-4 25ul

Overview

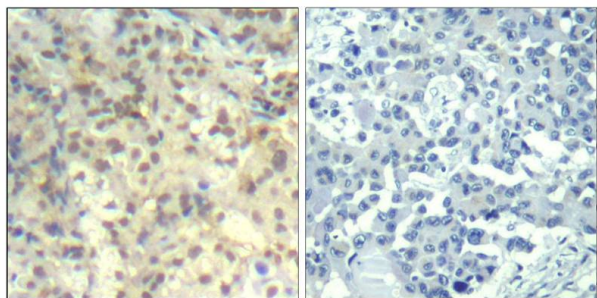
Product Name	cofilin1(phospho-Tyr139) Antibody
Host Species	Rabbit
Clonality	Polyclonal
Applications	IHC
Species Reactivity	Hu Ms Rt
Immunogen Type	Peptide-KLH
Target Name	cofilin1
Modification	Phospho-Tyr139
Alternative Names	CFL; CFL1;

Application Details

Predicted MW: 19kd

Immunohistochemistry: 1:50~1:100

Images



Immunohistochemical analysis of paraffin-embedded human lung carcinoma tissue using cofilin1(Phospho-Tyr139) Antibody #11506(left) or the same antibody preincubated with blocking peptide(right).

Descriptions

Immunogen	Peptide sequence around phosphorylation site of tyrosine 139 (N-C-Y(p)-E-E) derived from Human cofilin.
Specificity	The antibody detects endogenous level of cofilin1 only when phosphorylated at tyrosine 139.
Purification	Antibodies were produced by immunizing rabbits with synthetic phosphopeptide and KLH conjugates. Antibodies were purified by affinity-chromatography using epitope-specific phosphopeptide. Non-phospho specific antibodies were removed by chromatography using non-phosphopeptide.
Formulation	Supplied at 1.0mg/mL in phosphate buffered saline (without Mg ²⁺ and Ca ²⁺), pH 7.4, 150mM NaCl, 0.02% sodium azide and 50% glycerol.
Storage	Store at -20°C for long term preservation (recommended). Store at 4°C for short term use.
Accession NO.	Swiss-Prot: P23528NCBI Protein: NP_005498.1

Related Information

Controls reversibly actin polymerization and depolymerization in a pH-sensitive manner. It has the ability to bind G- and F-actin in a 1:1 ratio of cofilin to actin. It is the major component of intranuclear and cytoplasmic actin rods.

Carrier, M. et al. (1999) J. Biol. Chem. 274, 33827-33830.

Arber, S. et al. (1998) Nature 393, 805-809.

Yang, N. et al. (1998) Nature 393, 809-812.

Note: This product is for in vitro research use only and is not intended for use in humans or animals.