

# Smad2(Ab-220) Antibody

Catalog No: #21323



Package Size: #21323-1 50ul #21323-2 100ul #21323-4 25ul

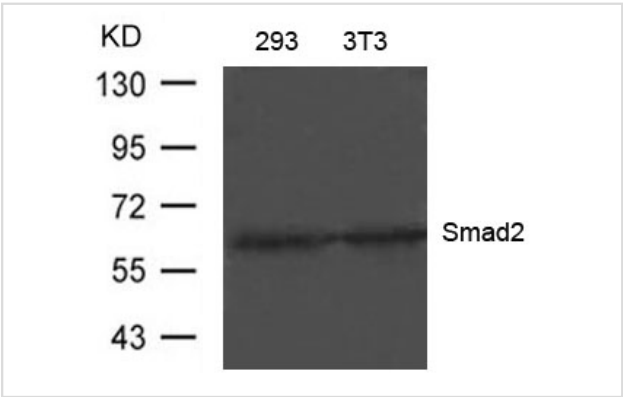
## Overview

Product Name	Smad2(Ab-220) Antibody
Host Species	Rabbit
Clonality	Polyclonal
Applications	WB IHC
Species Reactivity	Hu Ms Rt
Immunogen Type	Peptide-KLH
Target Name	Smad2
Alternative Names	JV18-1; MADH2; MADR2; Mad-related protein 2; Mothers against DPP homolog 2

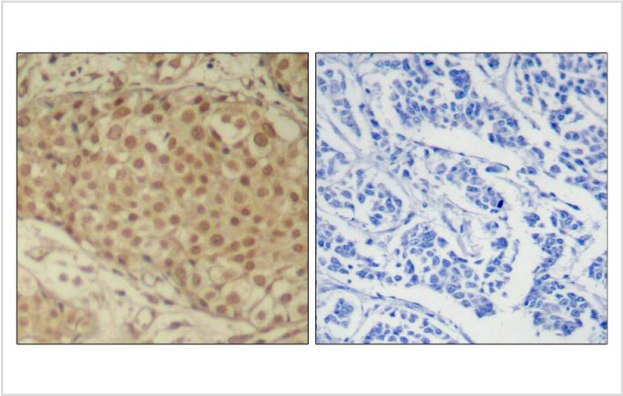
## Application Details

Predicted MW: 60kd
Western blotting: 1:500~1:1000
Immunohistochemistry: 1:50~1:100

## Images



Western blot analysis of extracts from 293 and 3T3 cells using Smad2(Ab-220) Antibody #21323



Immunohistochemical analysis of paraffin-embedded human breast carcinoma tissue using Smad2(Ab-220) Antibody #21323(left) or the same antibody preincubated with blocking peptide(right).

## Descriptions

Immunogen	Peptide sequence around aa.218~222 (P-E-T-P-P) derived from Human Smad2.
Specificity	The antibody detects endogenous level of total Smad2 protein.
Purification	Antibodies were produced by immunizing rabbits with synthetic peptide and KLH conjugates. Antibodies were purified by affinity-chromatography using epitope-specific peptide.
Formulation	Supplied at 1.0mg/mL in phosphate buffered saline (without Mg <sup>2+</sup> and Ca <sup>2+</sup> ), pH 7.4, 150mM NaCl, 0.02% sodium azide and 50% glycerol.
Storage	Store at -20°C for long term preservation (recommended). Store at 4°C for short term use.
Accession NO.	Swiss-Prot: Q15796NCBI Protein: NP_001003652.1

## Related Information

Transcriptional modulator activated by TGF-beta and activin type 1 receptor kinase. SMAD2 is a receptor-regulated SMAD (R-SMAD). May act as a tumor suppressor in colorectal carcinoma.

Sang Gyun Kim et al. (2004) Mol Biol Cell. February; 15(2): 420

Note: This product is for in vitro research use only and is not intended for use in humans or animals.