

BIM(Phospho-Ser69) Antibody

Catalog No: #11288



Package Size: #11288-1 50ul #11288-2 100ul #11288-4 25ul

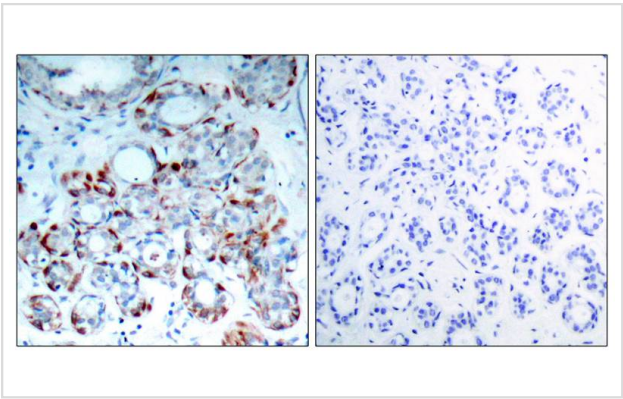
Overview

Product Name	BIM(Phospho-Ser69) Antibody
Host Species	Rabbit
Clonality	Polyclonal
Applications	IHC IF
Species Reactivity	Hu Ms Rt
Immunogen Type	Peptide-KLH
Target Name	BIM
Modification	Phospho-Ser69
Alternative Names	BCL2-like protein 11; BCL2L11; BOD; Bcl-2 related ovarian death protein;

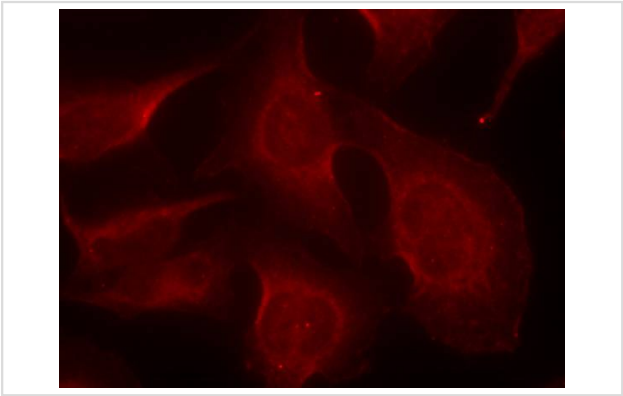
Application Details

Predicted MW: 23kd
Immunohistochemistry: 1:50~1:100
Immunofluorescence: 1:100~1:200

Images



Immunohistochemical analysis of paraffin-embedded human breast carcinoma tissue using BIM(Phospho-Ser69) Antibody #11288(left) or the same antibody preincubated with blocking peptide(right).



Immunofluorescence staining of methanol-fixed HeLa cells using BIM(Phospho-Ser69) Antibody #11288.

Descriptions

Immunogen	Peptide sequence around phosphorylation site of serine 69 (P-A-S(p)-P-G) derived from Human BIM.
Specificity	The antibody detects endogenous level of BIM only when phosphorylated at serine 69.
Purification	Antibodies were produced by immunizing rabbits with synthetic phosphopeptide and KLH conjugates. Antibodies were purified by affinity-chromatography using epitope-specific phosphopeptide. Non-phospho specific antibodies were removed by chromatography using non-phosphopeptide.
Formulation	Supplied at 1.0mg/mL in phosphate buffered saline (without Mg2+ and Ca2+), pH 7.4, 150mM NaCl, 0.02% sodium azide and 50% glycerol.
Storage	Store at -20°C for long term preservation (recommended). Store at 4°C for short term use.
Accession NO.	Swiss-Prot: O43521NCBI Protein: NP_006529.1

Related Information

Induces apoptosis. Isoform BimL is more potent than isoform BimEL. Isoform Bim-a1, isoform Bim-a2 and isoform Bim-a3 induce apoptosis, although less potent than the isoforms BimEL, BimL and BimS. Isoform Bim-gamma induces apoptosis

Fukazawa H, et al. (2004) Mol Cancer Ther ; 3(10): 1281-1288

Luciano F, et al. (2003) Oncogene ; 22(43): 6785-6793

Note: This product is for in vitro research use only and is not intended for use in humans or animals.