

# Met(Phospho-Tyr1234) Antibody

Catalog No: #11227



Package Size: #11227-1 50ul #11227-2 100ul #11227-4 25ul

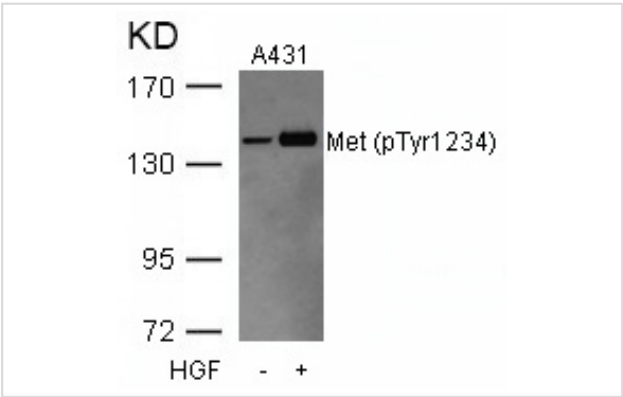
## Overview

Product Name	Met(Phospho-Tyr1234) Antibody
Host Species	Rabbit
Clonality	Polyclonal
Applications	WB
Species Reactivity	Hu Ms Rt
Immunogen Type	Peptide-KLH
Target Name	Met
Modification	Phospho-Tyr1234
Alternative Names	HGF receptor; receptor; Met proto-oncogene tyrosine kinase; c-met; kinase Met

## Application Details

Predicted MW: 156kd  
Western blotting: 1:500~1:1000

## Images



Western blot analysis of extracts from A431 cells untreated or treated with HGF using Met(Phospho-Tyr1234) Antibody #11227.

## Descriptions

Immunogen	Peptide sequence around phosphorylation site of tyrosine 1234 (K-E-Y(p)-Y-S) derived from Human Met.
Specificity	The antibody detects endogenous level of Met only when phosphorylated at tyrosine 1234.
Purification	Antibodies were produced by immunizing rabbits with synthetic phosphopeptide and KLH conjugates. Antibodies were purified by affinity-chromatography using epitope-specific phosphopeptide. Non-phospho specific antibodies were removed by chromatogramphy using non-phosphopeptide.
Formulation	Supplied at 1.0mg/mL in phosphate buffered saline (without Mg2+ and Ca2+), pH 7.4, 150mM NaCl, 0.02% sodium azide and 50% glycerol.
Storage	Store at -20°C for long term preservation (recommended). Store at 4°C for short term use.
Accession NO.	Swiss-Prot: P08581NCBI Protein: NP_000236.2

## Related Information

---

Receptor for hepatocyte growth factor and scatter factor. Has a tyrosine-protein kinase activity. Functions in cell proliferation, scattering, morphogenesis and survival.

Gherardi E. et al. (2003).Proc Natl Acad Sci U S A. 100(21): 12039-12044.

Shiu SH. et al. (2001) Proc Natl Acad Sci U S A. 98(19): 10763-10768.

Hughes AL. et al. (2001) Genome Res. 11(5): 771-780.

Onuchic LF. et al. (2002) Am J Hum Genet. 70(5): 1305-1317.

---

Note: This product is for in vitro research use only and is not intended for use in humans or animals.