

Raf1(Phospho-Ser338) Antibody

Catalog No: #11204



Package Size: #11204-1 50ul #11204-2 100ul #11204-4 25ul

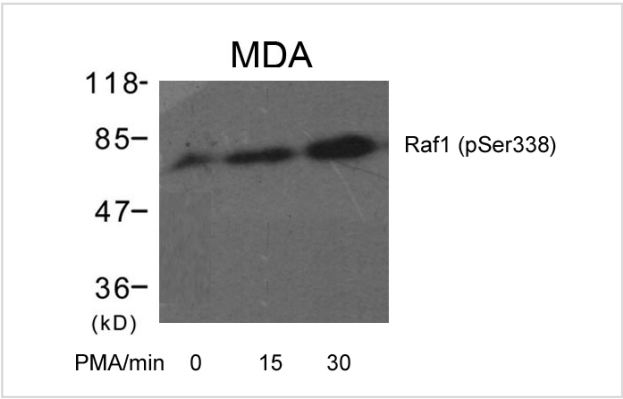
Overview

Product Name	Raf1(Phospho-Ser338) Antibody
Host Species	Rabbit
Clonality	Polyclonal
Applications	WB
Species Reactivity	Hu Ms
Immunogen Type	Peptide-KLH
Target Name	Raf1
Modification	Phospho-Ser338
Alternative Names	C-RAF; C-Raf; CRAF

Application Details

Predicted MW: 73kd
Western blotting: 1:500~1:1000

Images



Western blot analysis of extracts from MDA cells untreated or treated with PMA for the indicated times using Raf1(Phospho-Ser338) Antibody #11204.

Descriptions

Immunogen	Peptide sequence around phosphorylation site of serine 338 (R-D-S(p)-S-Y) derived from Human RAF.
Specificity	The antibody detects endogenous level of Raf1 only when phosphorylated at serine 338.
Purification	Antibodies were produced by immunizing rabbits with synthetic phosphopeptide and KLH conjugates. Antibodies were purified by affinity-chromatography using epitope-specific phosphopeptide. Non-phospho specific antibodies were removed by chromatogramphy using non-phosphopeptide.
Formulation	Supplied at 1.0mg/mL in phosphate buffered saline (without Mg2+ and Ca2+), pH 7.4, 150mM NaCl, 0.02% sodium azide and 50% glycerol.
Storage	Store at -20°C for long term preservation (recommended). Store at 4°C for short term use.
Accession NO.	Swiss-Prot: P04049 NCBI Protein: NP_002871.1

Related Information

Involved in the transduction of mitogenic signals from the cell membrane to the nucleus. Part of the Ras-dependent signaling pathway from receptors to the nucleus. Protects cells from apoptosis mediated by STK3.

Adams DG, et al. (2005) J Biol Chem. 280(52):42644-54.

Miura S, et al. (2003) Biochem Biophys Res Commun. 306(4):924-9.

Noser JA, et al. (2007) Mol Ther. 15(8):1531-6.

Note: This product is for in vitro research use only and is not intended for use in humans or animals.