

# SMC1(Phospho-Ser957) Antibody

Catalog No: #11198



Package Size: #11198-1 50ul #11198-2 100ul #11198-4 25ul

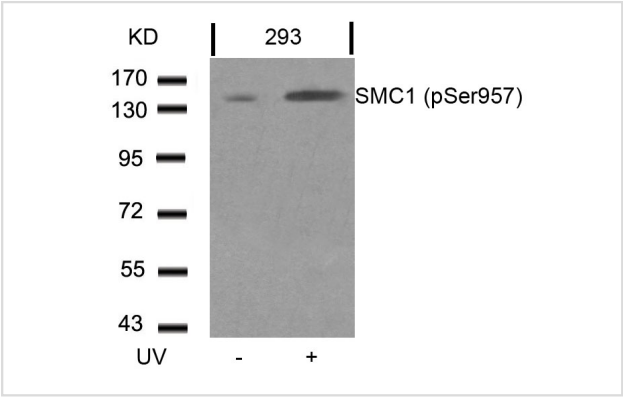
## Overview

Product Name	SMC1(Phospho-Ser957) Antibody
Host Species	Rabbit
Clonality	Polyclonal
Applications	WB IHC
Species Reactivity	Hu Ms
Immunogen Type	Peptide-KLH
Target Name	SMC1
Modification	Phospho-Ser957
Alternative Names	SM1A; SMC1A; SMC1L1; SMC1 alpha protein;

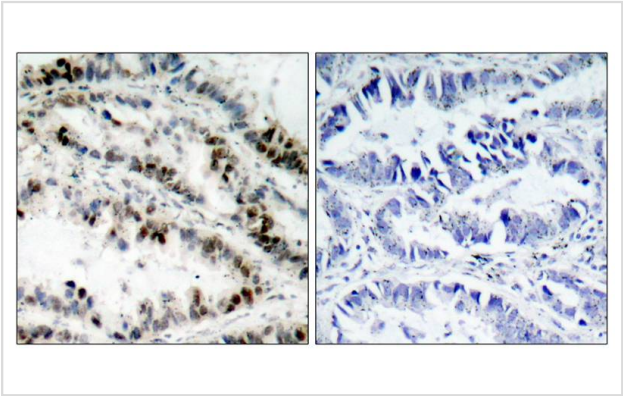
## Application Details

Predicted MW: 145kd
Western blotting: 1:500~1:1000
Immunohistochemistry: 1:50~1:100

## Images



Western blot analysis of extracts from 293 cells untreated or treated with UV using SMC1(Phospho-Ser957) Antibody #11198.



Immunohistochemical analysis of paraffin-embedded human lung carcinoma tissue using SMC1(Phospho-Ser957) Antibody #11198(left) or the same antibody preincubated with blocking peptide(right).

## Descriptions

Immunogen	Peptide sequence around phosphorylation site of serine 957 (G-S-S(p)-Q-G) derived from Human SMC1.
Specificity	The antibody detects endogenous level of SMC1 only when phosphorylated at serine 957.
Purification	Antibodies were produced by immunizing rabbits with synthetic phosphopeptide and KLH conjugates. Antibodies were purified by affinity-chromatography using epitope-specific phosphopeptide. Non-phospho specific antibodies were removed by chromatography using non-phosphopeptide.
Formulation	Supplied at 1.0mg/mL in phosphate buffered saline (without Mg <sup>2+</sup> and Ca <sup>2+</sup> ), pH 7.4, 150mM NaCl, 0.02% sodium azide and 50% glycerol.
Storage	Store at -20°C for long term preservation (recommended). Store at 4°C for short term use.
Accession NO.	Swiss-Prot: Q14683NCBI Protein: NP_006297.2

## Related Information

Involved in chromosome cohesion during cell cycle and in DNA repair. Central component of cohesin complex. The cohesin complex is required for the cohesion of sister chromatids after DNA replication. The cohesin complex apparently forms a large proteinaceous ring within which sister chromatids can be trapped. At anaphase, the complex is cleaved and dissociates from chromatin, allowing sister chromatids to segregate. The cohesin complex may also play a role in spindle pole assembly during mitosis. Involved in DNA repair via its interaction with BRCA1 and its related phosphorylation by ATM, or via its phosphorylation by ATR. Works as a downstream effector both in the ATM/NBS1 branch and in the ATR/MSH2 branch of S-phase checkpoint.

Yang XM. et al. (2004) Mol Cell Biol. 24(12): 5290-5303.

Kim ST. et al. (2002) Genes Dev. 16(5): 560-570.

Revenkova E. et al. (2001) Mol Cell Biol. 21(20): 6984-6998

**Note:** This product is for in vitro research use only and is not intended for use in humans or animals.