

p90RSK(Phospho-Ser352) Antibody

Catalog No: #11113



Package Size: #11113-1 50ul #11113-2 100ul #11113-4 25ul

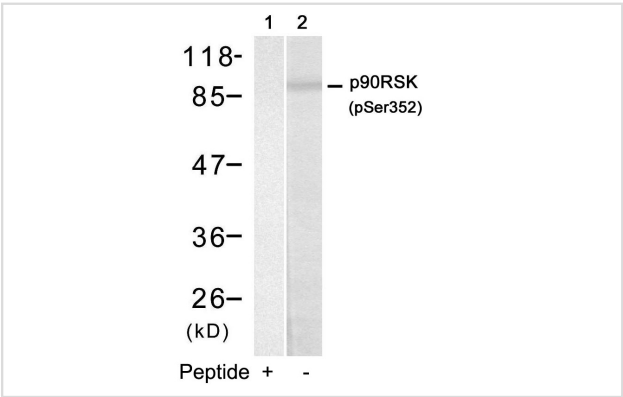
Overview

Product Name	p90RSK(Phospho-Ser352) Antibody
Host Species	Rabbit
Clonality	Polyclonal
Applications	WB
Species Reactivity	Human Mouse Rat
Immunogen Type	Peptide-KLH
Target Name	p90RSK
Modification	Phospho-Ser352
Alternative Names	KS6A1; MAPKAP-K1a; RPS6KA1; RSK-1; RSK1

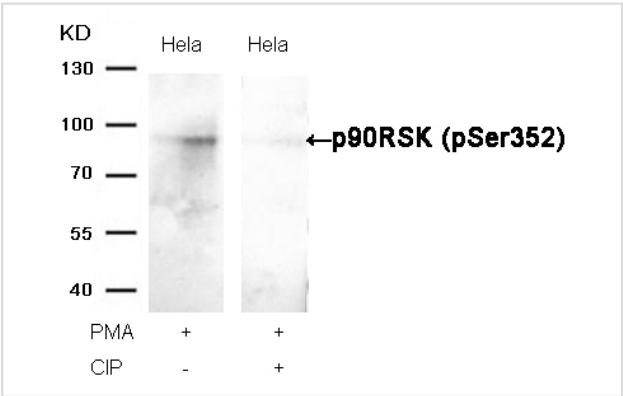
Application Details

Predicted MW: 90kd
Western blotting: 1:500~1:1000

Images



Western blot analysis of extracts from HUVEC cells using p90RSK(Phospho-Ser352) Antibody #11113(Lane 2) and the same antibody preincubated with blocking peptide(Lane1).



Western blot analysis of extracts from HeLa cells, treated with PMA or calf intestinal phosphatase (CIP), using p90RSK (Phospho-Ser352) Antibody #11113.

Descriptions

Immunogen	Peptide sequence around phosphorylation site of serine 352 (R-D-S(p)-P-G) derived from Human p90RSK.
Specificity	The antibody detects endogenous level of p90RSK only when phosphorylated at serine 352.
Purification	Antibodies were produced by immunizing rabbits with synthetic phosphopeptide and KLH conjugates. Antibodies were purified by affinity-chromatography using epitope-specific phosphopeptide. Non-phospho specific antibodies were removed by chromatography using non-phosphopeptide.
Formulation	Supplied at 1.0mg/mL in phosphate buffered saline (without Mg ²⁺ and Ca ²⁺), pH 7.4, 150mM NaCl, 0.02% sodium azide and 50% glycerol.
Storage	Store at -20°C for long term preservation (recommended). Store at 4°C for short term use.
Accession NO.	Swiss-Prot: Q15418NCBI Protein: NP_001006666.1

Related Information

Serine/threonine kinase that may play a role in mediating the growth-factor and stress induced activation of the transcription factor CREB.

Silverman E, et al. Mol Cell Biol. 2004 Dec; 24(24): 10573-10583.

Itoh S, et al. J Biol Chem 2005 Jun 24; 280(25): 24135-24142

Eisenmann KM, et al. Cancer Res 2003 Dec 01; 63(23): 8330-7

Note: This product is for in vitro research use only and is not intended for use in humans or animals.