

Ezrin(Phospho-Tyr353) Antibody

Catalog No: #11063



Package Size: #11063-1 50ul #11063-2 100ul #11063-4 25ul

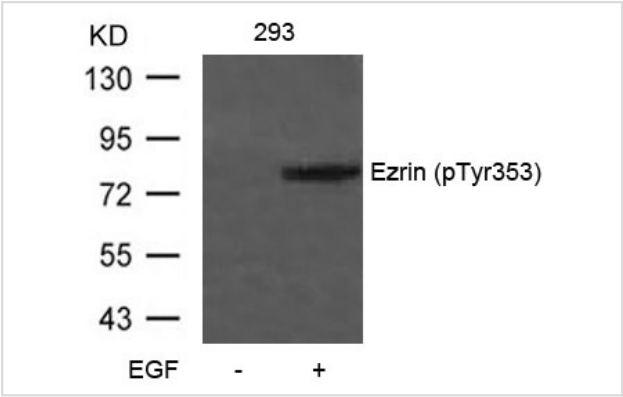
Overview

Product Name	Ezrin(Phospho-Tyr353) Antibody
Host Species	Rabbit
Clonality	Polyclonal
Applications	WB IHC
Species Reactivity	Hu Ms
Immunogen Type	Peptide-KLH
Target Name	Ezrin
Modification	Phospho-Tyr353
Alternative Names	Cytovillin; EZRI; VIL2; Villin 2; p81

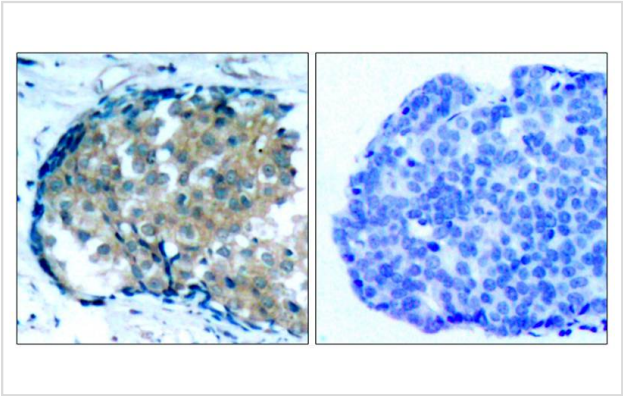
Application Details

Predicted MW: 81kd
Western blotting: 1:500~1:1000
Immunohistochemistry: 1:50~1:100

Images



Western blot analysis of extracts from 293 cells untreated or treated with EGF using Ezrin(Phospho-Tyr353) Antibody #11063.



Immunohistochemical analysis of paraffin-embedded human breast carcinoma tissue using Ezrin(Phospho-Tyr353) Antibody #11063(left) or the same antibody preincubated with blocking peptide(right).

Descriptions

Immunogen	Peptide sequence around phosphorylation site of tyrosine 353 (Q-D-Y(p)-E-E) derived from Human EZRIN.
Specificity	The antibody detects endogenous level of Ezrin only when phosphorylated at tyrosine 353.
Purification	Antibodies were produced by immunizing rabbits with synthetic phosphopeptide and KLH conjugates. Antibodies were purified by affinity-chromatography using epitope-specific phosphopeptide. Non-phospho specific antibodies were removed by chromatography using non-phosphopeptide.
Formulation	Supplied at 1.0mg/mL in phosphate buffered saline (without Mg ²⁺ and Ca ²⁺), pH 7.4, 150mM NaCl, 0.02% sodium azide and 50% glycerol.
Storage	Store at -20°C for long term preservation (recommended). Store at 4°C for short term use.
Accession NO.	Swiss-Prot: P15311NCBI Protein: NP_001104547.1

Related Information

Probably involved in connections of major cytoskeletal structures to the plasma membrane. In epithelial cells, required for the formation of microvilli and membrane ruffles on the apical pole. Along with PLEKHG6, required for normal macropinocytosis.

Zhao H, et al. (2004) Proc Natl Acad Sci U S A 101 (25): 9485-9490.

Wang Q, et al. (2003) J Biol Chem 278(48): 47731-47743.

Gautreau A, et al. (1999) Proc Natl Acad Sci U S A 96(13): 7300-7305.

Crepaldi T, et al. (1997) J Cell Biol 138(2): 423-34.

Published Papers

Yazhou Cui, Tianliang Li, Denglu Zhang et al., Expression of Ezrin and Phosphorylated Ezrin (pEzrin) in Pancreatic Ductal Adenocarcinoma., Cancer Investigation, 28(3) 242-247(2010)

[PMID:20158339](#)

Yasunori Oda MD, Shinichi Aishima PhD, Katsuya Morimatsu PhD et al., Differential ezrin and phosphorylated ezrin expression profiles between pancreatic intraepithelial neoplasia, intraductal papillary mucinous neoplasm, and invasive ductal carcinoma of the pancreas., Human Pathology, 44(8):1487B-C1498(2012)

[PMID:23465281](#)

Note: This product is for in vitro research use only and is not intended for use in humans or animals.