

CREB(Phospho-Ser133) Antibody

Catalog No: #11052



Package Size: #11052-1 50ul #11052-2 100ul #11052-4 25ul

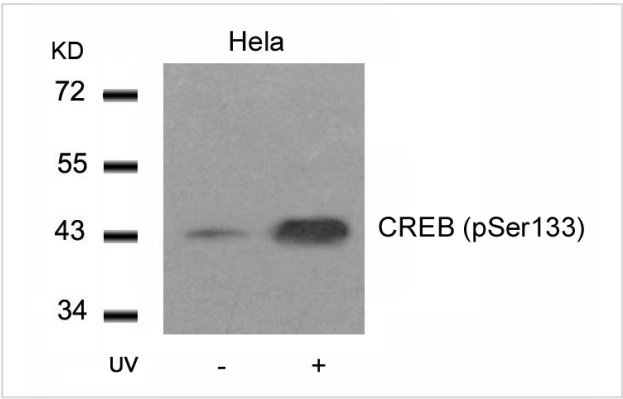
Overview

| | |
|--------------------|-------------------------------|
| Product Name | CREB(Phospho-Ser133) Antibody |
| Host Species | Rabbit |
| Clonality | Polyclonal |
| Applications | WB IHC |
| Species Reactivity | Human Mouse Rat |
| Immunogen Type | Peptide-KLH |
| Target Name | CREB |
| Modification | Phospho-Ser133 |
| Alternative Names | CREB-1; CREB1; |

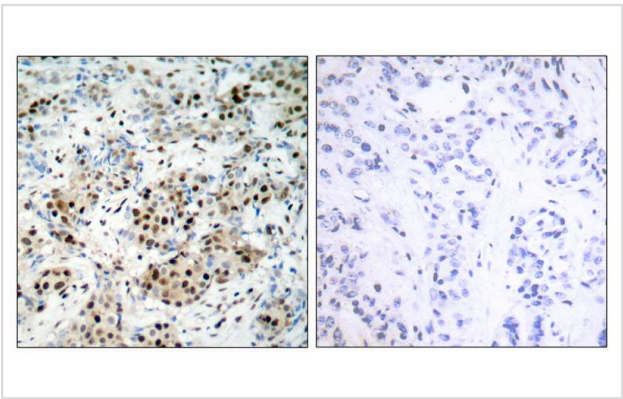
Application Details

| |
|----------------------------------|
| Predicted MW: 43kd |
| Western blotting: 1:500~1:1000 |
| Immunohistochemistry: 1:50~1:100 |

Images



Western blot analysis of extracts from HeLa cells untreated or treated with UV using CREB(Phospho-Ser133) Antibody #11052.



Immunohistochemical analysis of paraffin-embedded human breast carcinoma tissue using CREB(Phospho-Ser133) Antibody #11052(left) or the same antibody preincubated with blocking peptide(right).

Descriptions

| | |
|---------------|---|
| Immunogen | Peptide sequence around phosphorylation site of serine 133 (R-P-S(p)-Y-R) derived from Human CREB. |
| Specificity | The antibody detects endogenous level of CREB only when phosphorylated at serine 133. |
| Purification | Antibodies were produced by immunizing rabbits with synthetic phosphopeptide and KLH conjugates. Antibodies were purified by affinity-chromatography using epitope-specific phosphopeptide. Non-phospho specific antibodies were removed by chromatography using non-phosphopeptide. |
| Formulation | Supplied at 1.0mg/mL in phosphate buffered saline (without Mg ²⁺ and Ca ²⁺), pH 7.4, 150mM NaCl, 0.02% sodium azide and 50% glycerol. |
| Storage | Store at -20°C for long term preservation (recommended). Store at 4°C for short term use. |
| Accession NO. | Swiss-Prot: P16220NCBI Protein: NP_004370.1 |

Related Information

CREB1 is a transcription factor that is a member of the bZIP family of DNA binding proteins. It binds as a homodimer to the CRE (cAMP-Responsive Element), an octameric palindrome containing a conserved core sequence, 5-prime-TGACG-3-prime. It consists of two transcript variants encoding respective isoforms produced by alternate splicing. It is mapped to 2q32.3-q34 . It is phosphorylated by several protein kinases and induces transcription of genes in response to hormonal stimulation of the cAMP pathway. CREB1 is crucial for the consolidation of long-term conditioned fear memories, but not for encoding, storage, or retrieval of these memories. It is required for the stability of reactivated or retrieved conditioned fear memories .

Xing J, et al. (1998) Mol Cell Biol 18(4): 1946-55.

Tan Y, et al. (1996) EMBO J; 15(17): 4629-42.

Hao, M. et al. (1996) J. Biol. Chem. 271, 29380-29385.

Mayo LD, et al. (2001) Biol Chem; 276(27): 25184-9.

Note: This product is for in vitro research use only and is not intended for use in humans or animals.