

JunD(Phospho-Ser255) Antibody

Catalog No: #11028



Package Size: #11028-1 50ul #11028-2 100ul #11028-4 25ul

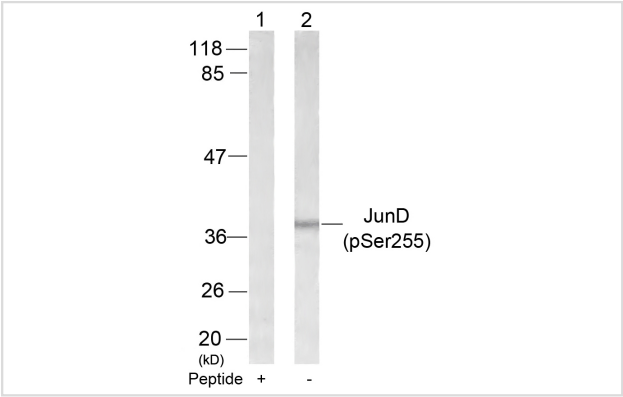
Overview

Product Name	JunD(Phospho-Ser255) Antibody
Host Species	Rabbit
Clonality	Polyclonal
Applications	WB IHC
Species Reactivity	Hu Ms Rt
Immunogen Type	Peptide-KLH
Target Name	JunD
Modification	Phospho-Ser255
Alternative Names	AP-1

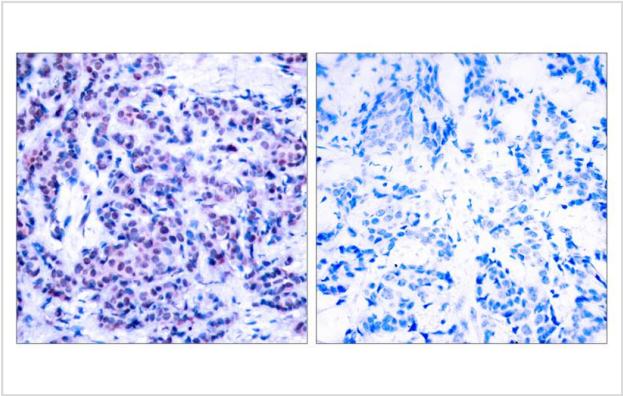
Application Details

Predicted MW: 38kd
Western blotting: 1:500~1:1000
Immunohistochemistry: 1:50~1:100

Images



Western blot analysis of extracts from 293 cells using JunD(Phospho-Ser255) Antibody #11028(Lane 2) and the same antibody preincubated with blocking peptide(Lane1).



Immunohistochemical analysis of paraffin-embedded human breast carcinoma tissue using JunD(Phospho-Ser255) Antibody #11028(left) or the same antibody preincubated with blocking peptide(right).

Descriptions

Immunogen	Peptide sequence around phosphorylation site of serine 255 (G-E-S(p)-P-P) derived from Human JunD.
Specificity	The antibody detects endogenous level of JunD only when phosphorylated at serine 255.
Purification	Antibodies were produced by immunizing rabbits with synthetic phosphopeptide and KLH conjugates. Antibodies were purified by affinity-chromatography using epitope-specific phosphopeptide. Non-phospho specific antibodies were removed by chromatography using non-phosphopeptide.
Formulation	Supplied at 1.0mg/mL in phosphate buffered saline (without Mg ²⁺ and Ca ²⁺), pH 7.4, 150mM NaCl, 0.02% sodium azide and 50% glycerol.
Storage	Store at -20°C for long term preservation (recommended). Store at 4°C for short term use.
Accession NO.	Swiss-Prot: P17535NCBI Protein: NP_005345.3

Related Information

Binds an AP-1 site and upon cotransfection stimulates the activity of a promoter that bears an AP-1 site.

Beausoleil S A, et al. (2004) Proc Natl Acad Sci U S A. 101(33): 12130-12135.

Note: This product is for in vitro research use only and is not intended for use in humans or animals.