

JunB(Phospho-Ser259) Antibody

Catalog No: #11027



Package Size: #11027-1 50ul #11027-2 100ul #11027-4 25ul

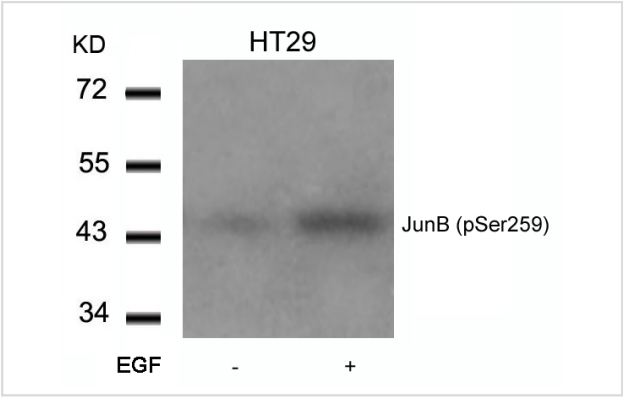
Overview

Product Name	JunB(Phospho-Ser259) Antibody
Host Species	Rabbit
Clonality	Polyclonal
Applications	WB IHC
Species Reactivity	Hu Ms Rt
Immunogen Type	Peptide-KLH
Target Name	JunB
Modification	Phospho-Ser259
Alternative Names	AP-1

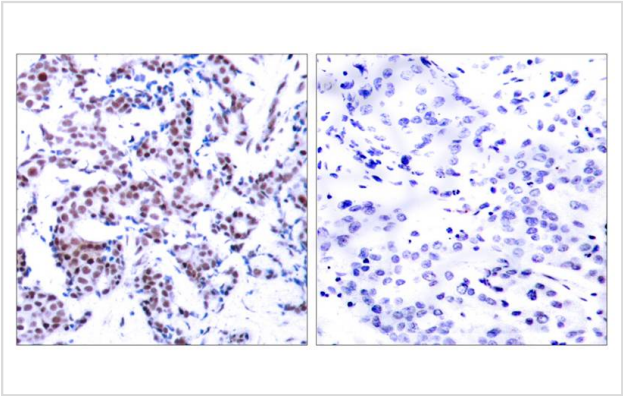
Application Details

Predicted MW: 43kd
Western blotting: 1:500~1:1000
Immunohistochemistry: 1:50~1:100

Images



Western blot analysis of extracts from HT29 cells untreated or treated with EGF using JunB(Phospho-Ser259) Antibody #11027.



Immunohistochemical analysis of paraffin-embedded human breast carcinoma tissue using JunB(Phospho-Ser259) Antibody #11027(left) or the same antibody preincubated with blocking peptide(right).

Descriptions

Immunogen	Peptide sequence around phosphorylation site of serine 259 (P-V-S(p)-P-I) derived from Human JunB.
Specificity	The antibody detects endogenous level of JunB only when phosphorylated at serine 259.
Purification	Antibodies were produced by immunizing rabbits with synthetic phosphopeptide and KLH conjugates. Antibodies were purified by affinity-chromatography using epitope-specific phosphopeptide. Non-phospho specific antibodies were removed by chromatography using non-phosphopeptide.
Formulation	Supplied at 1.0mg/mL in phosphate buffered saline (without Mg ²⁺ and Ca ²⁺), pH 7.4, 150mM NaCl, 0.02% sodium azide and 50% glycerol.
Storage	Store at -20°C for long term preservation (recommended). Store at 4°C for short term use.
Accession NO.	Swiss-Prot: P17275NCBI Protein: NP_002220.1

Related Information

Transcription factor involved in regulating gene activity following the primary growth factor response. Binds to the DNA sequence 5'-TGA[CG]TCA-3'.
Beausoleil S A, et al. (2004) Proc Natl Acad Sci U S A. 101(33): 12130-12135.

Note: This product is for in vitro research use only and is not intended for use in humans or animals.