

c-Jun(Phospho-Ser73) Antibody

Catalog No: #11003



Package Size: #11003-1 50ul #11003-2 100ul #11003-4 25ul

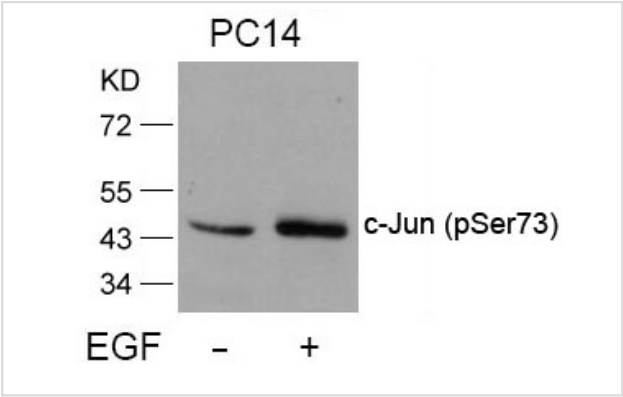
Overview

Product Name	c-Jun(Phospho-Ser73) Antibody
Host Species	Rabbit
Clonality	Polyclonal
Applications	WB IHC
Species Reactivity	Hu Ms Rt
Immunogen Type	Peptide-KLH
Target Name	c-Jun
Modification	Phospho-Ser73
Alternative Names	AH119; AP1; Jun A; c-Jun; p39

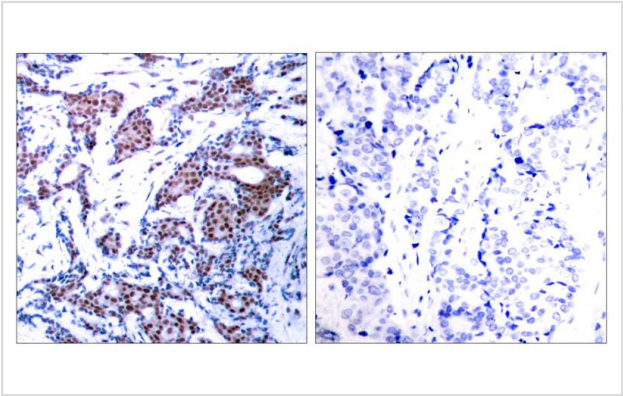
Application Details

Predicted MW: 43kd
Western blotting: 1:500~1:1000
Immunohistochemistry: 1:50~1:100

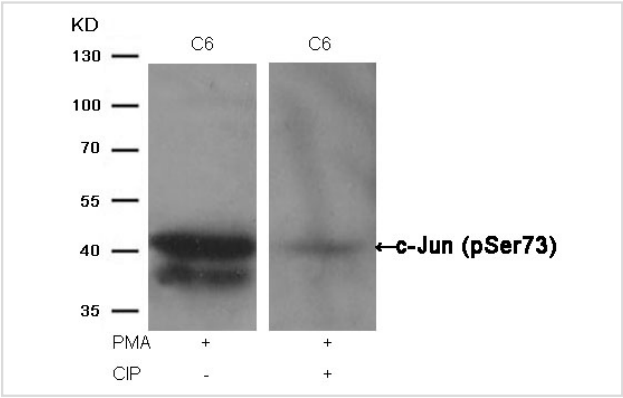
Images



Western blot analysis of extracts from PC14 cells untreated or treated with EGF using c-Jun(Phospho-Ser73) Antibody #11003.



Immunohistochemical analysis of paraffin-embedded human breast carcinoma tissue using c-Jun(Phospho-Ser73) Antibody #11003(left) or the same antibody preincubated with blocking peptide(right).



Western blot analysis of extracts from C6 cells, treated with PMA or calf intestinal phosphatase (CIP), using c-Jun (Phospho-Ser73) Antibody #11003.

Descriptions

Immunogen	Peptide sequence around phosphorylation site of serine 73 (L-A-S(p)-P-E) derived from Human c-Jun.
Specificity	The antibody detects endogenous level of c-Jun only when phosphorylated at serine 73.
Purification	Antibodies were produced by immunizing rabbits with synthetic phosphopeptide and KLH conjugates. Antibodies were purified by affinity-chromatography using epitope-specific phosphopeptide. Non-phospho specific antibodies were removed by chromatography using non-phosphopeptide.
Formulation	Supplied at 1.0mg/mL in phosphate buffered saline (without Mg2+ and Ca2+), pH 7.4, 150mM NaCl, 0.02% sodium azide and 50% glycerol.
Storage	Store at -20°C for long term preservation (recommended). Store at 4°C for short term use.
Accession NO.	Swiss-Prot: P05412NCBI Protein: NP_002219.1

Related Information

Transcription factor that recognizes and binds to the enhancer heptamer motif 5'-TGA[CG]TCA-3'.

Note: This product is for in vitro research use only and is not intended for use in humans or animals.