

# Ξ²-catenin(phospho-Tyr333) Antibody

Catalog No: #11574



Package Size: #11574-1 50ul #11574-2 100ul #11574-4 25ul

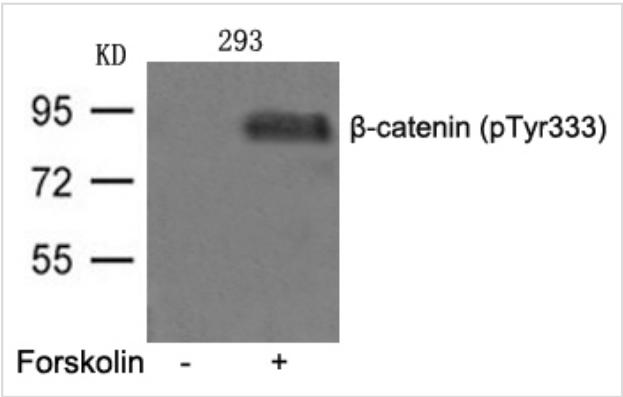
## Overview

Product Name	Ξ²-catenin(phospho-Tyr333) Antibody
Host Species	Rabbit
Clonality	Polyclonal
Applications	WB IHC
Species Reactivity	Hu
Immunogen Type	Peptide-KLH
Target Name	Ξ²-catenin
Modification	Phospho-Tyr333
Alternative Names	CTNNB1; CATNB; CTNB1; CTNNB;

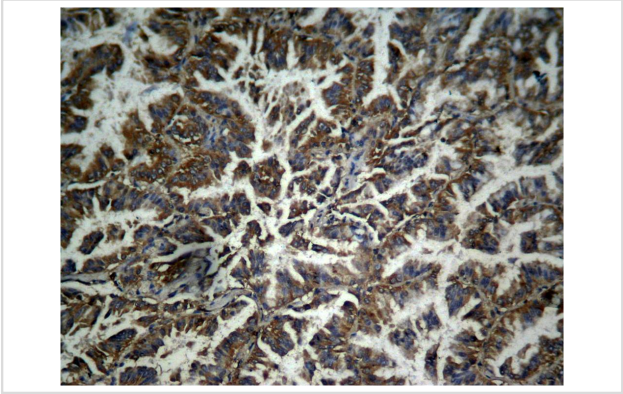
## Application Details

Predicted MW: 92kd
Western blotting: 1:500~1:1000

## Images



Western blot analysis of extracts from 293 cells untreated or treated with FSK using b-catenin(phospho-Tyr333) Antibody #11574.



Immunohistochemical analysis of paraffin-embedded human lung carcinoma tissue, using β-catenin (phospho-Tyr333) Antibody#11574.

## Descriptions

Immunogen	Peptide sequence around phosphorylation site of tyrosine 333 (Y-T-Y(p)-E-K) derived from Human b-catenin
Specificity	The antibody detects endogenous level of b-catenin only when phosphorylated at tyrosine 333.
Purification	Antibodies were produced by immunizing rabbits with synthetic phosphopeptide and KLH conjugates. Antibodies were purified by affinity-chromatography using epitope-specific phosphopeptide. Non-phospho specific antibodies were removed by chromatography using non-phosphopeptide.
Formulation	Supplied at 1.0mg/mL in phosphate buffered saline (without Mg2+ and Ca2+), pH 7.4, 150mM NaCl, 0.02% sodium azide and 50% glycerol.
Storage	Store at -20°C for long term preservation (recommended). Store at 4°C for short term use.
Accession NO.	NCBI Protein: NP_001091679.1

## Related Information

Key downstream component of the canonical Wnt signaling pathway. In the absence of Wnt, forms a complex with AXIN1, AXIN2, APC, CSNK1A1 and GSK3B that promotes phosphorylation on N-terminal Ser and Thr residues and ubiquitination of CTNNB1 via BTRC and its subsequent degradation by the proteasome. In the presence of Wnt ligand, CTNNB1 is not ubiquitinated and accumulates in the nucleus, where it acts as a coactivator for transcription factors of the TCF/LEF family, leading to activate Wnt responsive genes. Involved in the regulation of cell adhesion. Acts as a negative regulator of centrosome cohesion. Involved in the CDK2/PTPN6/CTNNB1/CEACAM1 pathway of insulin internalization. Blocks anoikis of malignant kidney and intestinal epithelial cells and promotes their anchorage-independent growth by down-regulating DAPK2. Disrupts PML function and PML-NB formation by inhibiting RANBP2-mediated sumoylation of PML.

Lillehoj E.P., Lu W., Kiser T., Goldblum S.E., Kim K.C.Biochim. Biophys. Acta 1773:1028-1038(2007)

Weiske J., Albring K.F., Huber O.Proc. Natl. Acad. Sci. U.S.A. 104:20344-20349(2007)

Bahmanyar S., Kaplan D.D., Deluca J.G., Giddings T.H. Jr., O'Toole E.T., Winey M., Salmon E.D., Casey P.J., Nelson W.J., Barth A.I.Genes Dev. 22:91-105(2008)

**Note:** This product is for in vitro research use only and is not intended for use in humans or animals.