

Myosin Light Chain 2 (Ab-19) Antibody

Catalog No: #21157



Package Size: #21157-1 50ul #21157-2 100ul #21157-4 25ul

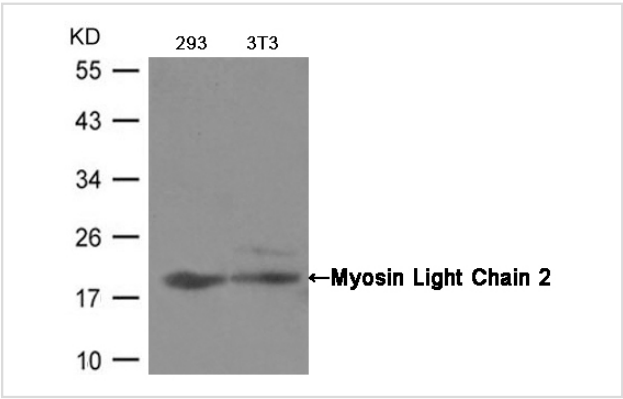
Overview

Product Name	Myosin Light Chain 2 (Ab-19) Antibody
Host Species	Rabbit
Clonality	Polyclonal
Applications	WB IF
Species Reactivity	Hu Ms Rt
Immunogen Type	Peptide-KLH
Target Name	MLC2
Alternative Names	LC20, MLC2, MRLC1, MYRL2, MLC-2C

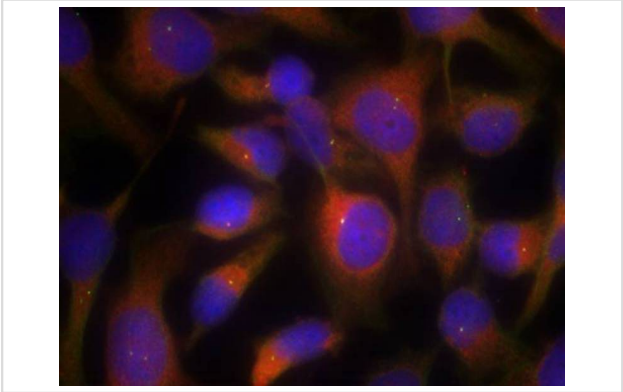
Application Details

Predicted MW: 18kd
Western blotting: 1:500~1:1000
Immunofluorescence: 1:100~1:200

Images



Western blot analysis of extracts from 293 and 3T3 cells using Myosin Light Chain 2 (Ab-19) Antibody #21157.



Immunofluorescence staining of methanol-fixed HeLa cells using Myosin Light Chain 2 (Ab-19) Antibody #21157.

Descriptions

Specificity	The antibody detects endogenous level of total Myosin Light Chain 2 protein.
Purification	Antibodies were produced by immunizing rabbits with synthetic peptide and KLH conjugates. Antibodies were purified by affinity-chromatography using epitope-specific peptide.
Formulation	Supplied at 1.0mg/mL in phosphate buffered saline (without Mg ²⁺ and Ca ²⁺), pH 7.4, 150mM NaCl, 0.02% sodium azide and 50% glycerol.
Storage	Store at -20°C for long term preservation (recommended). Store at 4°C for short term use.
Predicted MW	18kd
Accession NO.	Swiss-Prot: P24844NCBI Protein: NP_006088.2

Related Information

Myosin regulatory subunit that plays an important role in regulation of both smooth muscle and nonmuscle cell contractile activity via its phosphorylation. Implicated in cytokinesis, receptor capping, and cell locomotion

Janiak A, et al. (2006) Mol Biol Cell. Apr; 17(4): 1606-1619.

Croft DR, et al. (2006) Mol Cell Biol. 2 Jun; 26(12): 4612-4627

Li Z, et al. (2006) Mol Cell Biol. Jun; 26(11): 4240-4256

Note: This product is for in vitro research use only and is not intended for use in humans or animals.