

a-Internexin Antibody

Catalog No: #21638



Package Size: #21638-1 50ul #21638-2 100ul #21638-4 25ul

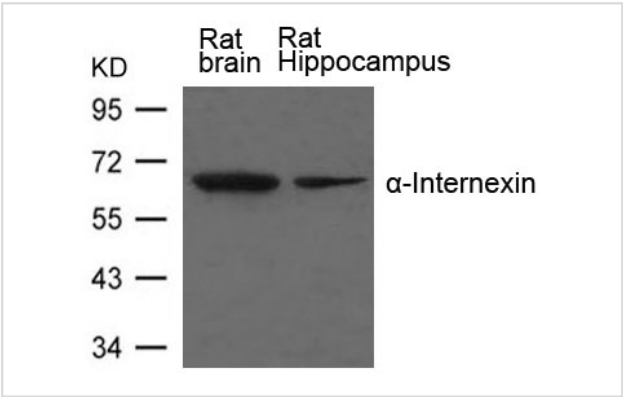
Overview

Product Name	a-Internexin Antibody
Host Species	Rabbit
Clonality	Polyclonal
Applications	WB
Species Reactivity	Hu
Immunogen Type	Peptide-KLH
Target Name	a-Internexin
Alternative Names	NEF5; NF-66; TXBP-1; FLJ18662; MGC12702

Application Details

Predicted MW: 66kd
Western blotting: 1:500~1:1000

Images



Western blot analysis of extract from Rat brain and Rat hippocampus Tissue using a-Internexin Antibody #21638

Descriptions

Immunogen	Peptide sequence around aa.491~495 (E-T-T-I-S)
Specificity	The antibody detects endogenous level of total a-Internexin protein.
Purification	Antibodies were produced by immunizing rabbits with synthetic peptide and KLH conjugates. Antibodies were purified by affinity-chromatography using epitope-specific peptide.
Formulation	Supplied at 1.0mg/mL in phosphate buffered saline (without Mg2+ and Ca2+), pH 7.4, 150mM NaCl, 0.02% sodium azide and 50% glycerol.
Storage	Store at -20°C for long term preservation (recommended). Store at 4°C for short term use.
Accession NO.	Swiss-Prot: Q16352NCBI Protein: NP_116116.1

Related Information

Class-IV neuronal intermediate filament that is able to self-assemble. It is involved in the morphogenesis of neurons. It may form an independent structural network without the involvement of other neurofilaments or it may cooperate with NF-L to form the filamentous backbone to which NF-M and NF-H attach to form the cross-bridges.

Matsuoka S., Ballif B.A., Smogorzewska A., McDonald E.R. Science 316:1160-1166(2007)

Note: This product is for in vitro research use only and is not intended for use in humans or animals.