

# FOXP1 Antibody

Catalog No: #21637



Package Size: #21637-1 50ul #21637-2 100ul #21637-4 25ul

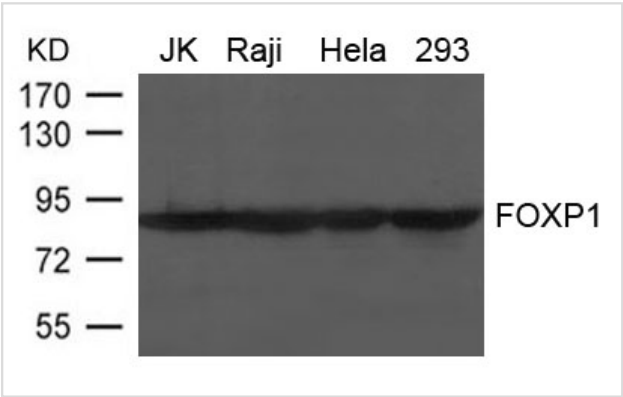
## Overview

Product Name	FOXP1 Antibody
Host Species	Rabbit
Clonality	Polyclonal
Applications	WB
Species Reactivity	Hu Ms Rt
Immunogen Type	Peptide-KLH
Target Name	FOXP1
Alternative Names	QRF1; 12CC4; hFKH1B; HSPC215;

## Application Details

Predicted MW: 82~90kd
Western blotting: 1:500~1:1000

## Images



Western blot analysis of extract from JK, Raji, Hela and 293 cells using FOXP1 Antibody #21637

## Descriptions

Immunogen	Peptide sequence around aa. 669~673 (D-E-P-V-N)
Specificity	The antibody detects endogenous level of total FOXP1 protein.
Purification	Antibodies were produced by immunizing rabbits with synthetic peptide and KLH conjugates. Antibodies were purified by affinity-chromatography using epitope-specific peptide.
Formulation	Supplied at 1.0mg/mL in phosphate buffered saline (without Mg2+ and Ca2+), pH 7.4, 150mM NaCl, 0.02% sodium azide and 50% glycerol.
Storage	Store at -20°C for long term preservation (recommended). Store at 4°C for short term use.
Accession NO.	Swiss-Prot: Q9H334NCBI Protein: NP_116071.2

## Related Information

---

Transcriptional repressor. It plays an important role in the specification and differentiation of lung epithelium. Can act with CTBP1 to synergistically repress transcription but CTPBP1 is not essential. Essential transcriptional regulator of B cell development

Hamdan F.F., Daoud H., Rochefort D., Piton A. J. Hum. Genet. 87:671-678(2010)

---

Note: This product is for in vitro research use only and is not intended for use in humans or animals.