

MAP2 Antibody

Catalog No: #21636



Package Size: #21636-1 50ul #21636-2 100ul #21636-4 25ul

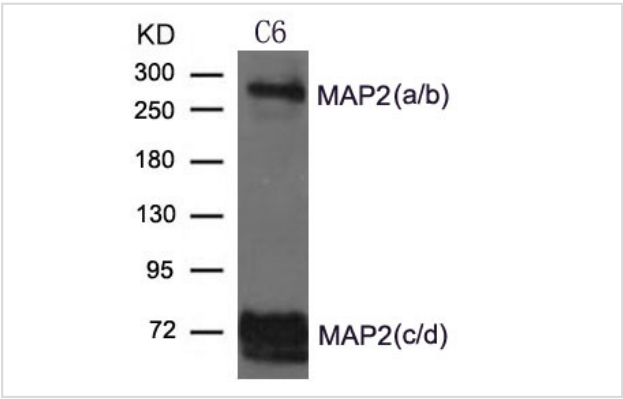
Overview

Product Name	MAP2 Antibody
Host Species	Rabbit
Clonality	Polyclonal
Applications	WB IF
Species Reactivity	Hu Ms Rt
Immunogen Type	Peptide-KLH
Target Name	MAP2
Alternative Names	MAP2A; MAP2B; MAP2C

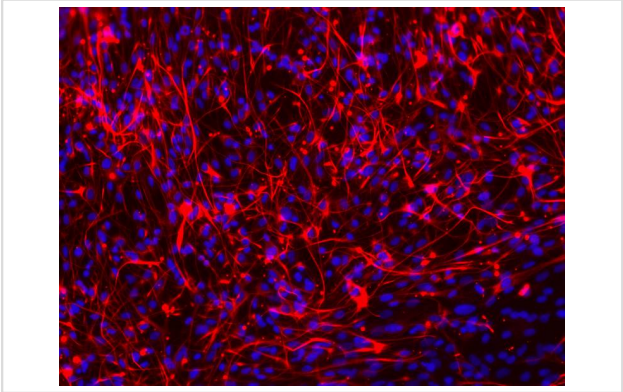
Application Details

Predicted MW: 55-75(2c/2d), 280(2a/2b)kd
Western blotting: 1:500~1:1000
Immunofluorescence: 1:100~1:200

Images



Western blot analysis of extract from C6 cells using MAP2 Antibody #21636



Immunofluorescence staining of paraffin-embedded Glioma cells of Spinal Cord using MAP2 Antibody #21636.

Descriptions

Immunogen	Peptide sequence around aa.1819~1823 (T-A-A-L-A) derived from Human MAP2.
Specificity	The antibody detects endogenous level of total MAP2 protein.
Purification	Antibodies were produced by immunizing rabbits with synthetic peptide and KLH conjugates. Antibodies were purified by affinity-chromatography using epitope-specific peptide.
Formulation	Supplied at 1.0mg/mL in phosphate buffered saline (without Mg ²⁺ and Ca ²⁺), pH 7.4, 150mM NaCl, 0.02% sodium azide and 50% glycerol.
Storage	Store at -20°C for long term preservation (recommended). Store at 4°C for short term use.
Accession NO.	Swiss-Prot: P11137NCBI Protein: NP_002365.3

Related Information

The exact function of MAP2 is unknown but MAPs may stabilize the microtubules against depolymerization. They also seem to have a stiffening effect on microtubules.

DeGiorgis J.A., Jaffe H., Moreira J.E., Carlotti C.G. Jr. Proteome Res. 4:306-315(2005)

Olsen J.V., Blagoev B., Gnäd F., Macek B. Mann M.Cell 127:635-648(2006)

Matsuoka S., Ballif B.A., Smogorzewska A., McDonald E.R. Science 316:1160-1166(2007)

Note: This product is for in vitro research use only and is not intended for use in humans or animals.