

SPARC Antibody

Catalog No: #21633



Package Size: #21633-1 50ul #21633-2 100ul #21633-4 25ul

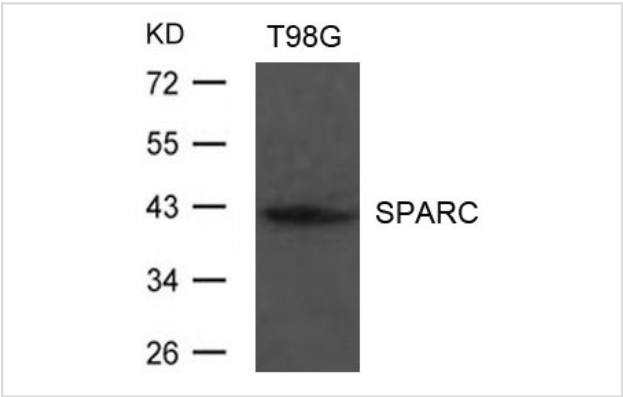
Overview

| | |
|--------------------|----------------|
| Product Name | SPARC Antibody |
| Host Species | Rabbit |
| Clonality | Polyclonal |
| Applications | WB |
| Species Reactivity | Hu |
| Immunogen Type | Peptide-KLH |
| Target Name | SPARC |
| Alternative Names | ON; BM-40; |

Application Details

| |
|--------------------------------|
| Predicted MW: 42kd |
| Western blotting: 1:500~1:1000 |

Images



Western blot analysis of extract from T98G cells using SPARC Antibody #21633

Descriptions

| | |
|---------------|---|
| Immunogen | Peptide sequence around aa.52~56 (V-G-E-F-D) derived from Human SPARC. |
| Specificity | The antibody detects endogenous level of total SPARC protein. |
| Purification | Antibodies were produced by immunizing rabbits with synthetic peptide and KLH conjugates. Antibodies were purified by affinity-chromatography using epitope-specific peptide. |
| Formulation | Supplied at 1.0mg/mL in phosphate buffered saline (without Mg2+ and Ca2+), pH 7.4, 150mM NaCl, 0.02% sodium azide and 50% glycerol. |
| Storage | Store at -20°C for long term preservation (recommended). Store at 4°C for short term use. |
| Accession NO. | Swiss-Prot: P09486NCBI Protein: NP_003109.1 |

Related Information

Appears to regulate cell growth through interactions with the extracellular matrix and cytokines. Binds calcium and copper, several types of collagen, albumin, thrombospondin, PDGF and cell membranes. There are two calcium binding sites; an acidic domain that binds 5 to 8 Ca^{2+} with a low affinity and an EF-hand loop that binds a Ca^{2+} ion with a high affinity.

Kelm R.J. Jr., Mann K.G. Blood 75:1105-1113(1990)

Wewer U.M., Albrechtsen R., Fisher L.W. Am. J. Pathol. 132:345-355(1988)

Kuhn C., Mason R.J. Am. J. Pathol. 147:1759-1769(1995)

Note: This product is for in vitro research use only and is not intended for use in humans or animals.