

# VEGFR1 Antibody

Catalog No: #21631



Package Size: #21631-1 50ul #21631-2 100ul #21631-4 25ul

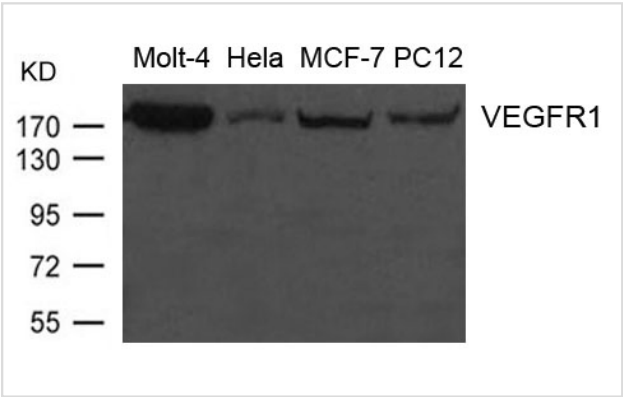
## Overview

Product Name	VEGFR1 Antibody
Host Species	Rabbit
Clonality	Polyclonal
Applications	WB
Species Reactivity	Hu
Immunogen Type	Peptide-KLH
Target Name	VEGFR1
Alternative Names	FLT; FLT1;

## Application Details

Predicted MW: 180kd
Western blotting: 1:500~1:1000

## Images



Western blot analysis of extract from Molt-4, Hela, MCF-7 and PC12 cells using VEGFR1 Antibody #21631

## Descriptions

Immunogen	Peptide sequence around aa.31~35 (D-P-E-L-S) derived from Human VEGFR1.
Specificity	The antibody detects endogenous level of total VEGFR1 protein.
Purification	Antibodies were produced by immunizing rabbits with synthetic peptide and KLH conjugates. Antibodies were purified by affinity-chromatography using epitope-specific peptide.
Formulation	Supplied at 1.0mg/mL in phosphate buffered saline (without Mg2+ and Ca2+), pH 7.4, 150mM NaCl, 0.02% sodium azide and 50% glycerol.
Storage	Store at -20°C for long term preservation (recommended). Store at 4°C for short term use.
Accession NO.	Swiss-Prot: P17948NCBI Protein: NP_002010.2

## Related Information

---

Receptor for VEGF, VEGFB and PGF. Has a tyrosine-protein kinase activity. The VEGF-kinase ligand/receptor signaling system plays a key role in vascular development and regulation of vascular permeability. Isoform SFlt1 may have an inhibitory role in angiogenesis.

Rikova K., Guo A., Zeng Q., Possemato A. Cell 131:1190-1203(2007)

---

Note: This product is for in vitro research use only and is not intended for use in humans or animals.