

# Doublecortin Antibody

Catalog No: #21630



Package Size: #21630-1 50ul #21630-2 100ul #21630-4 25ul

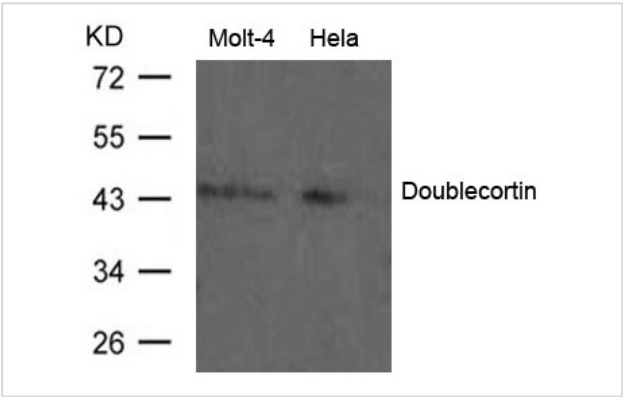
## Overview

Product Name	Doublecortin Antibody
Host Species	Rabbit
Clonality	Polyclonal
Applications	WB
Species Reactivity	Hu Ms Rt
Immunogen Type	Peptide-KLH
Target Name	Doublecortin
Alternative Names	DCX; DC; DBCN

## Application Details

Predicted MW: 40-45kd
Western blotting: 1:500~1:1000

## Images



Western blot analysis of extract from Molt-4 and HeLa cells using Doublecortin Antibody #21630

## Descriptions

Immunogen	Peptide sequence around aa.413~417( P-T-S-P-G) derived from Human Doublecortin.
Specificity	The antibody detects endogenous level of total Doublecortin protein.
Purification	Antibodies were produced by immunizing rabbits with synthetic peptide and KLH conjugates. Antibodies were purified by affinity-chromatography using epitope-specific peptide.
Formulation	Supplied at 1.0mg/mL in phosphate buffered saline (without Mg2+ and Ca2+), pH 7.4, 150mM NaCl, 0.02% sodium azide and 50% glycerol.
Storage	Store at -20°C for long term preservation (recommended). Store at 4°C for short term use.
Accession NO.	Swiss-Prot: O43602NCBI Protein: NP_000546.2

## Related Information

Seems to be required for initial steps of neuronal dispersion and cortex lamination during cerebral cortex development. May act by competing with the putative neuronal protein kinase DCAMKL1 in binding to a target protein. May in that way participate in a signaling pathway that is crucial for neuronal interaction before and during migration, possibly as part of a calcium ion-dependent signal transduction pathway. May be part with LIS-1 of an overlapping, but distinct, signaling pathways that promote neuronal migration.

Des Portes V., Pinard J.-M., Billuart P. Chelly J. Cell 92:51-61(1998)

Pilz D.T., Matsumoto N., Minnerath S.R., Mills P. Hum. Mol. Genet. 7:2029-2037(1998)

---

Note: This product is for in vitro research use only and is not intended for use in humans or animals.