

# Rab5 Antibody

Catalog No: #21628



Package Size: #21628-1 50ul #21628-2 100ul #21628-4 25ul

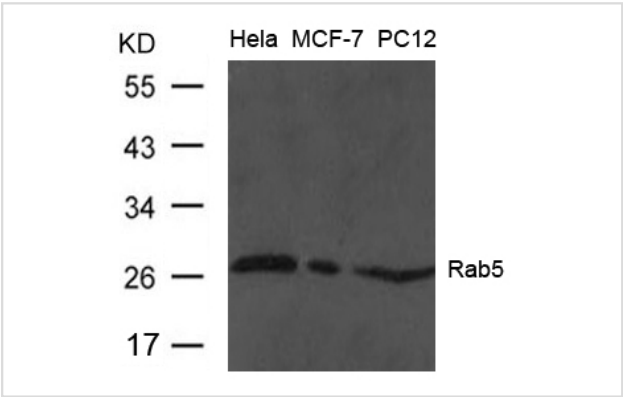
## Overview

Product Name	Rab5 Antibody
Host Species	Rabbit
Clonality	Polyclonal
Applications	WB
Species Reactivity	Hu Ms Rt
Immunogen Type	Peptide-KLH
Target Name	Rab5
Alternative Names	RAB5A

## Application Details

Predicted MW: 25kd
Western blotting: 1:500~1:1000

## Images



Western blot analysis of extract from HeLa, MCF and PC12 cells using Rab5 Antibody #21628

## Descriptions

Immunogen	Peptide sequence around aa.188~192( N-P-G-A-N) derived from Human Rab5.
Specificity	The antibody detects endogenous level of total Rab5 protein.
Purification	Antibodies were produced by immunizing rabbits with synthetic peptide and KLH conjugates. Antibodies were purified by affinity-chromatography using epitope-specific peptide.
Formulation	Supplied at 1.0mg/mL in phosphate buffered saline (without Mg2+ and Ca2+), pH 7.4, 150mM NaCl, 0.02% sodium azide and 50% glycerol.
Storage	Store at -20°C for long term preservation (recommended). Store at 4°C for short term use.
Accession NO.	Swiss-Prot: P20339NCBI Protein: NP_004153.2

## Related Information

---

Required for the fusion of plasma membranes and early endosomes.

Callaghan J.M., Nixon S., Bucci C., Toh B.-H., Stenmark H. Eur. J. Biochem. 265:361-366(1999) Hoffenberg S., Liu X., Nikolova L., Hall H.S., Dai W., Baughn R.E., Dickey B.F., Barbieri M.A., Aballay A., Stahl P.D., Knoll B.J. J. Biol. Chem. 275:24661-24669(2000)

---

Note: This product is for in vitro research use only and is not intended for use in humans or animals.