

MELK Antibody

Catalog No: #21625



Package Size: #21625-1 50ul #21625-2 100ul #21625-4 25ul

Overview

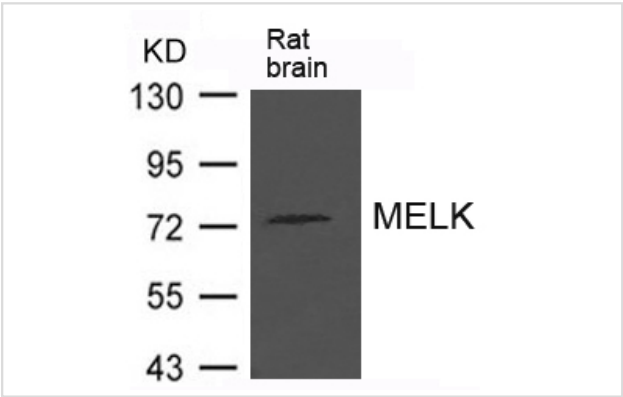
Product Name	MELK Antibody
Host Species	Rabbit
Clonality	Polyclonal
Applications	WB
Species Reactivity	Human Mouse
Immunogen Type	Peptide-KLH
Target Name	MELK
Alternative Names	hPK38; KIAA0175; hMELK

Application Details

Predicted MW: 74kd

Western blotting: 1:500

Images



Western blot analysis of extract from Rat brain tissue using MELK Antibody #21625

Descriptions

Immunogen	Peptide sequence around aa.626~630 (I-R-R-Q-R) derived from Human MELK.
Specificity	The antibody detects endogenous level of total MELK protein.
Purification	Antibodies were produced by immunizing rabbits with synthetic peptide and KLH conjugates. Antibodies were purified by affinity-chromatography using epitope-specific peptide.
Formulation	Supplied at 1.0mg/mL in phosphate buffered saline (without Mg2+ and Ca2+), pH 7.4, 150mM NaCl, 0.02% sodium azide and 50% glycerol.
Storage	Store at -20°C for long term preservation (recommended). Store at 4°C for short term use.
Accession NO.	Swiss-Prot: Q14680NCBI Protein: NP_055606.1

Related Information

Phosphorylates ZNF622 and may contribute to its redirection to the nucleus. May be involved in the inhibition of spliceosome assembly during mitosis.

Seong H.-A., Gil M., Kim K.-T., Kim S.-J., Ha H. Biochem. J. 361:597-604(2002)

Vulsteke V., Beullens M., Boudrez A., Keppens S. Biol. Chem. 279:8642-8647(2004)

Note: This product is for in vitro research use only and is not intended for use in humans or animals.