

CD3E Antibody

Catalog No: #21622



Package Size: #21622-1 50ul #21622-2 100ul #21622-4 25ul

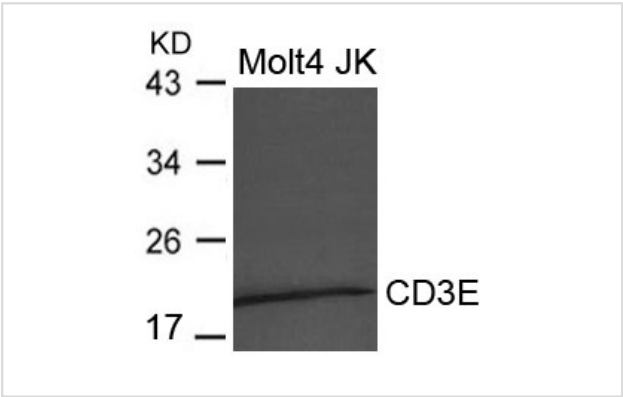
Overview

Product Name	CD3E Antibody
Host Species	Rabbit
Clonality	Polyclonal
Applications	WB
Species Reactivity	Hu Ms Rt
Immunogen Type	Peptide-KLH
Target Name	CD3E
Alternative Names	T3E; TCRE; FLJ18683

Application Details

Predicted MW: 21kd
Western blotting: 1:500~1:1000

Images



Western blot analysis of extract from Molt4 and JK cells using CD3E Antibody #21622

Descriptions

Immunogen	Peptide sequence around aa.197~201(D-L-Y-S-G) derived from Human CD3E.
Specificity	The antibody detects endogenous level of total CD3E protein.
Purification	Antibodies were produced by immunizing rabbits with synthetic peptide and KLH conjugates. Antibodies were purified by affinity-chromatography using epitope-specific peptide.
Formulation	Supplied at 1.0mg/mL in phosphate buffered saline (without Mg2+ and Ca2+), pH 7.4, 150mM NaCl, 0.02% sodium azide and 50% glycerol.
Storage	Store at -20°C for long term preservation (recommended). Store at 4°C for short term use.
Accession NO.	Swiss-Prot: P07766NCBI Protein: NP_000724.1

Related Information

The CD3 complex mediates signal transduction.

Note: This product is for in vitro research use only and is not intended for use in humans or animals.