

Glut4 Antibody

Catalog No: #21619



Package Size: #21619-1 50ul #21619-2 100ul #21619-4 25ul

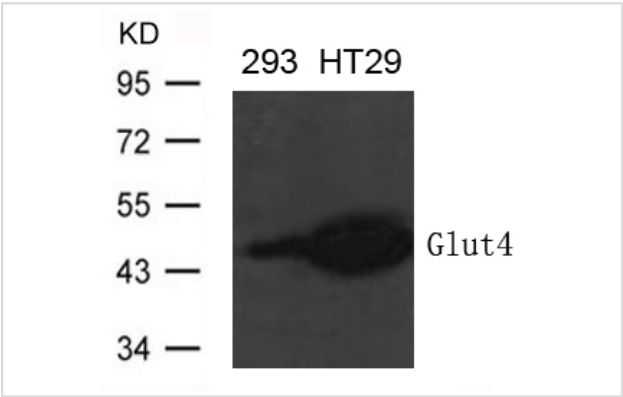
Overview

Product Name	Glut4 Antibody
Host Species	Rabbit
Clonality	Polyclonal
Applications	WB
Species Reactivity	Hu Ms Rt
Immunogen Type	Peptide-KLH
Target Name	Glut4
Alternative Names	SLC2A4

Application Details

Predicted MW: 45kd
Western blotting: 1:500~1:1000

Images



Western blot analysis of extract from 293 and HT-29 cells using Glut4 Antibody #21619

Descriptions

Immunogen	Peptide sequence around aa.501~ 505(E-Y-L-G-P) derived from Human Glut4.
Specificity	The antibody detects endogenous level of total Glut4 protein.
Purification	Antibodies were produced by immunizing rabbits with synthetic peptide and KLH conjugates. Antibodies were purified by affinity-chromatography using epitope-specific peptide.
Formulation	Supplied at 1.0mg/mL in phosphate buffered saline (without Mg2+ and Ca2+), pH 7.4, 150mM NaCl, 0.02% sodium azide and 50% glycerol.
Storage	Store at -20°C for long term preservation (recommended). Store at 4°C for short term use.
Accession NO.	Swiss-Prot: P14672NCBI Protein: NP_001033.1

Related Information

Insulin-regulated facilitative glucose transporter.

Note: This product is for in vitro research use only and is not intended for use in humans or animals.