

Neuroserpin Antibody

Catalog No: #21618



Package Size: #21618-1 50ul #21618-2 100ul #21618-4 25ul

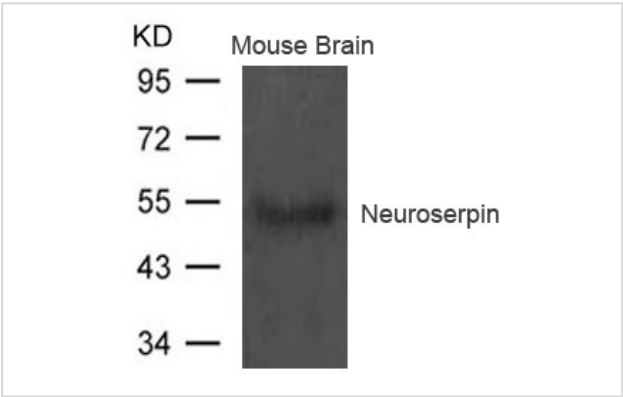
Overview

| | |
|--------------------|----------------------|
| Product Name | Neuroserpin Antibody |
| Host Species | Rabbit |
| Clonality | Polyclonal |
| Applications | WB |
| Species Reactivity | Hu Ms Rt |
| Immunogen Type | Peptide-KLH |
| Target Name | Neuroserpin |
| Alternative Names | PI12; SERPINI1; |

Application Details

| |
|--------------------------------|
| Predicted MW: 55kd |
| Western blotting: 1:500~1:1000 |

Images



Western blot analysis of extract from Mouse brain tissue using Neuroserpin Antibody #21618

Descriptions

| | |
|---------------|---|
| Immunogen | Peptide sequence around aa.402~406(T-S-G-H-D) derived from Human Neuroserpin. |
| Specificity | The antibody detects endogenous level of total Neuroserpin protein. |
| Purification | Antibodies were produced by immunizing rabbits with synthetic peptide and KLH conjugates. Antibodies were purified by affinity-chromatography using epitope-specific peptide. |
| Formulation | Supplied at 1.0mg/mL in phosphate buffered saline (without Mg2+ and Ca2+), pH 7.4, 150mM NaCl, 0.02% sodium azide and 50% glycerol. |
| Storage | Store at -20°C for long term preservation (recommended). Store at 4°C for short term use. |
| Accession NO. | Swiss-Prot: Q99574NCBI Protein: NP_001116224.1 |

Related Information

Serine protease inhibitor that inhibits plasminogen activators and plasmin but not thrombin. May be involved in the formation or reorganization of synaptic connections as well as for synaptic plasticity in the adult nervous system. May protect neurons from cell damage by tissue-type plasminogen activator.

Davis R.L., Shrimpton A.E., Holohan P.D. Nature 401:376-379(1999)

Note: This product is for in vitro research use only and is not intended for use in humans or animals.