

# Tubulin b-III Antibody

Catalog No: #21617



Package Size: #21617-1 50ul #21617-2 100ul #21617-4 25ul

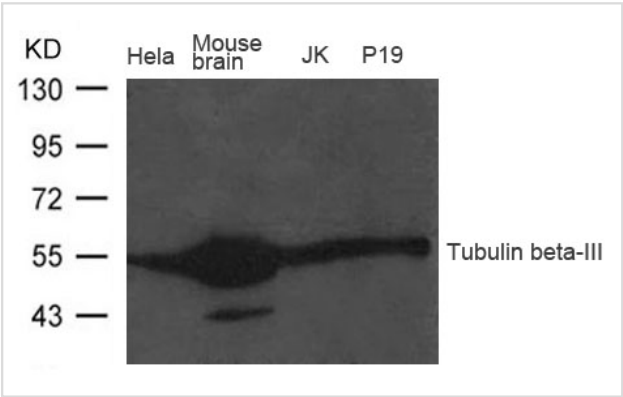
## Overview

Product Name	Tubulin b-III Antibody
Host Species	Rabbit
Clonality	Polyclonal
Applications	WB
Species Reactivity	Hu Ms
Immunogen Type	Peptide-KLH
Target Name	Tubulin b-III
Alternative Names	TUBB4; CFEOM3A; TUBB3

## Application Details

Predicted MW: 55kd
Western blotting: 1:500~1:1000

## Images



Western blot analysis of extract from Mouse brain tissue, HeLa, JK and P19 cells using Tubulin beta-III Antibody #21617

## Descriptions

Immunogen	Peptide sequence around aa.442~446(E-E-S-E-A) derived from Human Tubulin b-III.
Specificity	The antibody detects endogenous level of total Tubulin b-III protein.
Purification	Antibodies were produced by immunizing rabbits with synthetic peptide and KLH conjugates. Antibodies were purified by affinity-chromatography using epitope-specific peptide.
Formulation	Supplied at 1.0mg/mL in phosphate buffered saline (without Mg2+ and Ca2+), pH 7.4, 150mM NaCl, 0.02% sodium azide and 50% glycerol.
Storage	Store at -20°C for long term preservation (recommended). Store at 4°C for short term use.
Accession NO.	Swiss-Prot: Q13509NCBI Protein: NP_006077.2

## Related Information

---

Tubulin is the major constituent of microtubules. It binds two moles of GTP, one at an exchangeable site on the beta chain and one at a non-exchangeable site on the  $\alpha$ -chain. TUBB3 plays a critical role in proper axon guidance and maintenance.

Tischfield M.A., Baris H.N., Wu C., Rudolph G. Cell 140:74-87(2010)

Katsetos C.D., Legido A., Perentes E., Mork S.J. J. Child Neurol. 18:851-866(2003)

---

Note: This product is for in vitro research use only and is not intended for use in humans or animals.