

Integrin b1(CD29) Antibody

Catalog No: #21614



Package Size: #21614-1 50ul #21614-2 100ul #21614-4 25ul

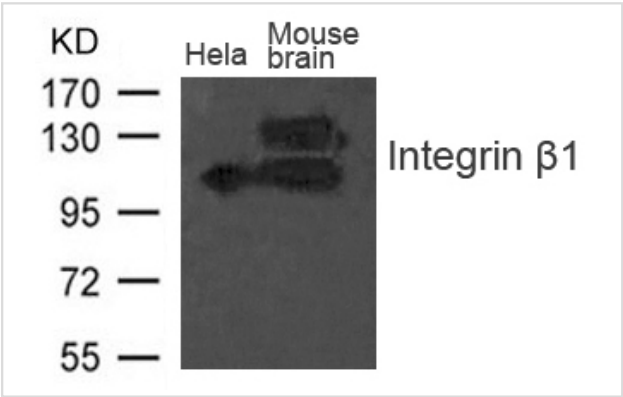
Overview

Product Name	Integrin b1(CD29) Antibody
Host Species	Rabbit
Clonality	Polyclonal
Applications	WB
Species Reactivity	Hu Ms Rt
Immunogen Type	Peptide-KLH
Target Name	Integrin b1(CD29)
Alternative Names	FNRB; MDF2; VLAB; MSK12; ITGB1

Application Details

Predicted MW: 115 135kd
Western blotting: 1:500~1:1000

Images



Western blot analysis of extract from Mouse brain tissue and Hela cells using Integrin b1(CD29) Antibody #21614

Descriptions

Immunogen	Peptide sequence around aa.790~794 (V-V-N-P-K) derived from Human Integrin b1 (CD29).
Specificity	The antibody detects endogenous level of total Integrin b1 (CD29) protein.
Purification	Antibodies were produced by immunizing rabbits with synthetic peptide and KLH conjugates. Antibodies were purified by affinity-chromatography using epitope-specific peptide.
Formulation	Supplied at 1.0mg/mL in phosphate buffered saline (without Mg2+ and Ca2+), pH 7.4, 150mM NaCl, 0.02% sodium azide and 50% glycerol.
Storage	Store at -20°C for long term preservation (recommended). Store at 4°C for short term use.
Accession NO.	Swiss-Prot: P05556NCBI Protein: NP_002202.2

Related Information

Integrins α -1/ β -1, α -2/ β -1, α -10/ β -1 and α -11/ β -1 are receptors for collagen. Integrins α -1/ β -1 and α -2/ β -2 recognize the proline-hydroxylated sequence G-F-P-G-E-R in collagen. Integrins α -2/ β -1, α -3/ β -1, α -4/ β -1, α -5/ β -1, α -8/ β -1, α -10/ β -1, α -11/ β -1 and α -V/ β -1 are receptors for fibronectin. α -4/ β -1 recognizes one or more domains within the alternatively spliced CS-1 and CS-5 regions of fibronectin. Integrin α -5/ β -1 is a receptor for fibrinogen. Integrin α -1/ β -1, α -2/ β -1, α -6/ β -1 and α -7/ β -1 are receptors for laminin. Integrin α -4/ β -1 is a receptor for VCAM1. It recognizes the sequence Q-I-D-S in VCAM1. Integrin α -9/ β -1 is a receptor for VCAM1, cytotactin and osteopontin. It recognizes the sequence A-E-I-D-G-I-E-L in cytotactin. Integrin α -3/ β -1 is a receptor for epiligrin, thrombospondin and CSPG4. α -3/ β -1 may mediate with LGALS3 the stimulation by CSPG4 of endothelial cells migration. Integrin α -V/ β -1 is a receptor for vitronectin. Beta-1 integrins recognize the sequence R-G-D in a wide array of ligands. Isoform beta-1B interferes with isoform beta-1A resulting in a dominant negative effect on cell adhesion and migration (in vitro). In case of HIV-1 infection, the interaction with extracellular viral Tat protein seems to enhance angiogenesis in Kaposi's sarcoma lesions. When associated with α -7/ β -1 integrin, regulates cell adhesion and laminin matrix deposition. Involved in promoting endothelial cell motility and angiogenesis. May be involved in up-regulation of the activity of kinases such as PKC via binding to KRT1. Together with KRT1 and GNB2L1/RACK1, serves as a platform for SRC activation or inactivation. Plays a mechanistic adhesive role during telophase, required for the successful completion of cytokinesis

Balzac F., Retta S.F., Albin A., Melchiorri A., Kotliansky V.E., Geuna M. J. Cell Biol. 127:557-565(1994)

Chuang N.N., Huang C.C. Biochem. Soc. Trans. 35:1292-1294(2007)

Pellinen T., Tuomi S., Arjonen A., Wolf M. J. Dev. Cell 15:371-385(2008)

Note: This product is for in vitro research use only and is not intended for use in humans or animals.