

# Glycogen Synthase Antibody

Catalog No: #21613



Package Size: #21613-1 50ul #21613-2 100ul #21613-4 25ul

## Overview

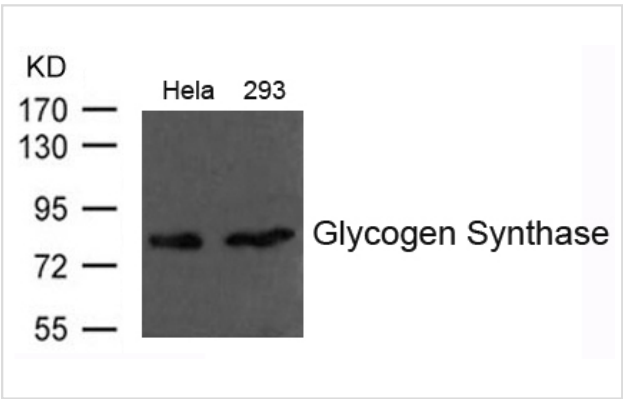
|                    |                            |
|--------------------|----------------------------|
| Product Name       | Glycogen Synthase Antibody |
| Host Species       | Rabbit                     |
| Clonality          | Polyclonal                 |
| Applications       | WB                         |
| Species Reactivity | Hu Ms Rt                   |
| Immunogen Type     | Peptide-KLH                |
| Target Name        | Glycogen Synthase          |
| Alternative Names  | GYS                        |

## Application Details

Predicted MW: 84kd

Western blotting: 1:500

## Images



Western blot analysis of extract from HeLa and 293 cells using Glycogen Synthase Antibody #21613

## Descriptions

|               |   |
|---------------|---|
| Immunogen     | Peptide sequence around aa. 644~648 (P-S-P-S-L) derived from Human Glycogen Synthase .  |
| Specificity   | The antibody detects endogenous level of total Glycogen Synthase protein.   |
| Purification  | Antibodies were produced by immunizing rabbits with synthetic peptide and KLH conjugates. Antibodies were purified by affinity-chromatography using epitope-specific peptide. |
| Formulation   | Supplied at 1.0mg/mL in phosphate buffered saline (without Mg2+ and Ca2+), pH 7.4, 150mM NaCl, 0.02% sodium azide and 50% glycerol.   |
| Storage       | Store at -20°C for long term preservation (recommended). Store at 4°C for short term use.   |
| Accession NO. | Swiss-Prot: P13807NCBI Protein: NP_001155059.1  |

## Related Information

---

Transfers the glycosyl residue from UDP-Glc to the non-reducing end of  $\alpha$ -1,4-glucan.

Skurat A.V., Dietrich A.D., Roach P.J. Arch. Biochem. Biophys. 456:93-97(2006)

---

Note: This product is for in vitro research use only and is not intended for use in humans or animals.