

GAD65(GAD2) Antibody

Catalog No: #21611



Package Size: #21611-1 50ul #21611-2 100ul #21611-4 25ul

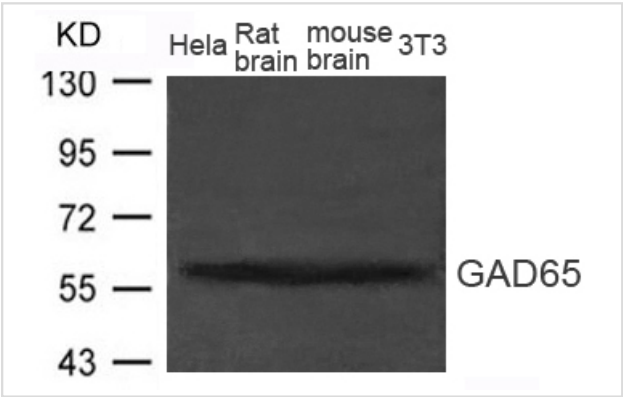
Overview

Product Name	GAD65(GAD2) Antibody
Host Species	Rabbit
Clonality	Polyclonal
Applications	WB
Species Reactivity	Hu Ms Rt
Immunogen Type	Peptide-KLH
Target Name	GAD65(GAD2)
Alternative Names	MGC161605; MGC161607;

Application Details

Predicted MW: 60kd
Western blotting: 1:500~1:1000

Images



Western blot analysis of extract from Rat brain, Mouse brain tissue and HeLa, 3T3 cells using GAD65(GAD2)) Antibody #21611

Descriptions

Immunogen	Peptide sequence around aa.148~152 (E-L-A-D-Q) derived from Human GAD65 (GAD2).
Specificity	The antibody detects endogenous level of total GAD65 (GAD2)protein.
Purification	Antibodies were produced by immunizing rabbits with synthetic peptide and KLH conjugates. Antibodies were purified by affinity-chromatography using epitope-specific peptide.
Formulation	Supplied at 1.0mg/mL in phosphate buffered saline (without Mg2+ and Ca2+), pH 7.4, 150mM NaCl, 0.02% sodium azide and 50% glycerol.
Storage	Store at -20°C for long term preservation (recommended). Store at 4°C for short term use.
Accession NO.	Swiss-Prot: Q05329NCBI Protein: NP_000809.1

Related Information

Catalyzes the production of GABA.

Note: This product is for in vitro research use only and is not intended for use in humans or animals.