

Foxj1(HFH4) Antibody

Catalog No: #21610



Package Size: #21610-1 50ul #21610-2 100ul #21610-4 25ul

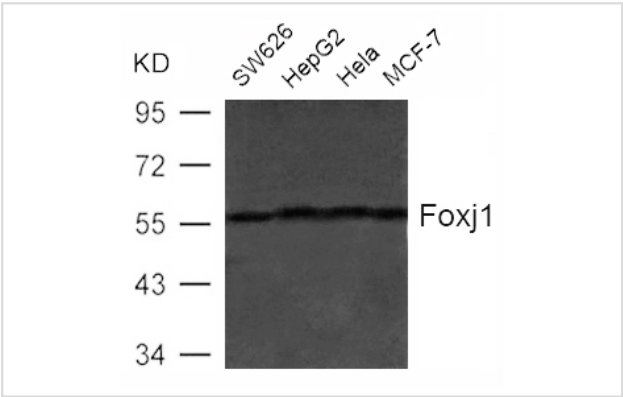
Overview

Product Name	Foxj1(HFH4) Antibody
Host Species	Rabbit
Clonality	Polyclonal
Applications	WB
Species Reactivity	Hu
Immunogen Type	Peptide-KLH
Target Name	Foxj1(HFH4)
Alternative Names	HFH4; HFH-4; FKHL13

Application Details

Predicted MW: 58kd
Western blotting: 1:500~1:1000

Images



Western blot analysis of extract from SW626, HepG2, Hela and MCF-7 cells using Foxj1(HFH4) Antibody #21610

Descriptions

Immunogen	Peptide sequence around aa.413~417(D-W-A-S-V) derived from Human Foxj1 (HFH4).
Specificity	The antibody detects endogenous level of total Foxj1 (HFH4) protein.
Purification	Antibodies were produced by immunizing rabbits with synthetic peptide and KLH conjugates. Antibodies were purified by affinity-chromatography using epitope-specific peptide.
Formulation	Supplied at 1.0mg/mL in phosphate buffered saline (without Mg2+ and Ca2+), pH 7.4, 150mM NaCl, 0.02% sodium azide and 50% glycerol.
Storage	Store at -20°C for long term preservation (recommended). Store at 4°C for short term use.
Accession NO.	Swiss-Prot: Q92949NCBI Protein: NP_001445.2

Related Information

May play an important role in cell fate determination during lung development and in spermatogenesis.

Li C.-S., Chae S.-C., Lee J.-H., Zhang Q., Chung H.-T.J. Hum. Genet. 51:292-297(2006)

Note: This product is for in vitro research use only and is not intended for use in humans or animals.