

EEA1 Antibody

Catalog No: #21601



Package Size: #21601-1 50ul #21601-2 100ul #21601-4 25ul

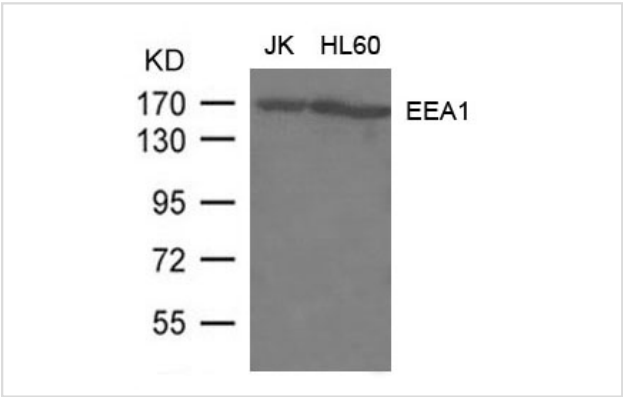
Overview

Product Name	EEA1 Antibody
Host Species	Rabbit
Clonality	Polyclonal
Applications	WB
Species Reactivity	Hu Ms Rt
Immunogen Type	Peptide-KLH
Target Name	EEA1
Alternative Names	MST105; ZFYVE2; MSTP105

Application Details

Predicted MW: 170kd
Western blotting: 1:500~1:1000

Images



Western blot analysis of extract from JK, HL-60 cells using EEA1 Antibody #21601

Descriptions

Immunogen	Peptide sequence around aa.12~16(R-V-G-S-Q)derived from Human EEA1.
Specificity	The antibody detects endogenous level of total EEA1 protein.
Purification	Antibodies were produced by immunizing rabbits with synthetic peptide and KLH conjugates. Antibodies were purified by affinity-chromatography using epitope-specific peptide.
Formulation	Supplied at 1.0mg/mL in phosphate buffered saline (without Mg2+ and Ca2+), pH 7.4, 150mM NaCl, 0.02% sodium azide and 50% glycerol.
Storage	Store at -20°C for long term preservation (recommended). Store at 4°C for short term use.
Accession NO.	Swiss-Prot: Q15075NCBI Protein: NP_003557.2

Related Information

Binds phospholipid vesicles containing phosphatidylinositol 3-phosphate and participates in endosomal trafficking.

Note: This product is for in vitro research use only and is not intended for use in humans or animals.