

Met(Ab-1003) Antibody

Catalog No: #21548



Package Size: #21548-1 50ul #21548-2 100ul #21548-4 25ul

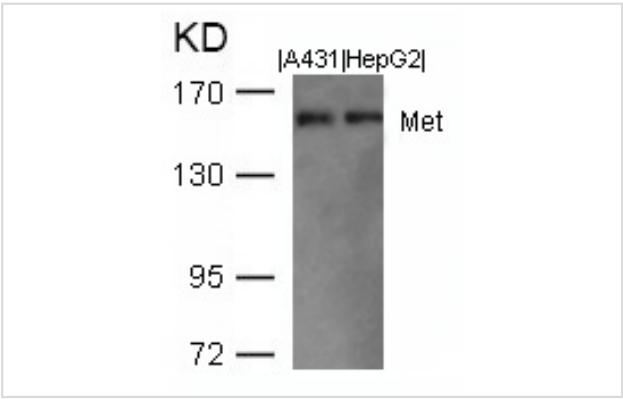
Overview

Product Name	Met(Ab-1003) Antibody
Host Species	Rabbit
Clonality	Polyclonal
Applications	WB IHC
Species Reactivity	Hu Ms Rt
Immunogen Type	Peptide-KLH
Target Name	Met
Alternative Names	Scatter factor receptor

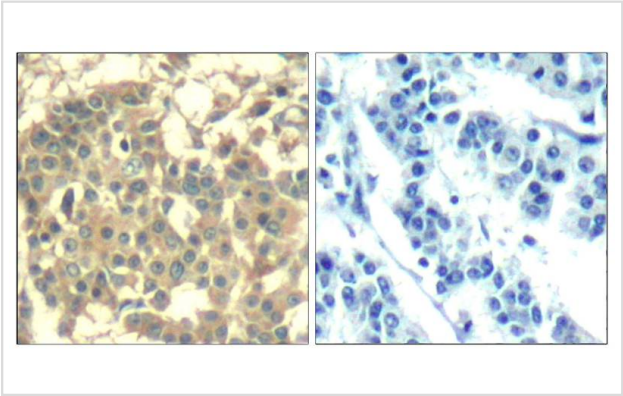
Application Details

Predicted MW: 156kd
Western blotting: 1:500~1:1000
Immunohistochemistry: 1:50~1:100

Images



Western blot analysis of extracts from A431 and HepG2 cells using Met(Ab-1003) Antibody #21548.



Immunohistochemical analysis of paraffin-embedded human breast carcinoma tissue using Met(Ab-1003) Antibody #21548(left) or the same antibody preincubated with blocking peptide(right).

Descriptions

Immunogen	Peptide sequence around aa. 1001~1005 (V-D-Y-R-A) derived from Human Met.
Specificity	The antibody detects endogenous level of total Met protein.
Purification	Antibodies were produced by immunizing rabbits with synthetic peptide and KLH conjugates. Antibodies were purified by affinity-chromatography using epitope-specific peptide.
Formulation	Supplied at 1.0mg/mL in phosphate buffered saline (without Mg ²⁺ and Ca ²⁺), pH 7.4, 150mM NaCl, 0.02% sodium azide and 50% glycerol.
Storage	Store at -20°C for long term preservation (recommended). Store at 4°C for short term use.
Accession NO.	Swiss-Prot: P08581NCBI Protein: NP_000236.2

Related Information

Receptor for hepatocyte growth factor and scatter factor. Has a tyrosine-protein kinase activity. Functions in cell proliferation, scattering, morphogenesis and survival.

Weidner, K.M. et al. (1993) J. Cell Biol. 121, 145-154.

Traxler, P. et al. (2001) Med. Res. Rev. 21, 499-512.

Schaeper, U. et al. (2000) J. Cell Biol. 149, 1419-1432.

Park, M. et al. (1986) Cell 45, 895-904.

Note: This product is for in vitro research use only and is not intended for use in humans or animals.