

# VEGFR2(Ab-1059) Antibody

Catalog No: #21531



Package Size: #21531-1 50ul #21531-2 100ul #21531-4 25ul

## Overview

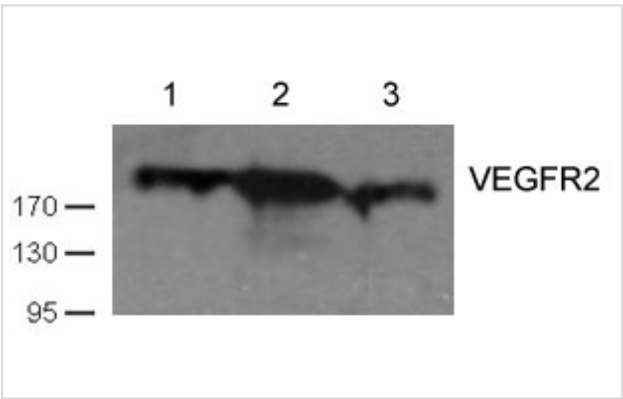
Product Name	VEGFR2(Ab-1059) Antibody
Host Species	Rabbit
Clonality	Polyclonal
Applications	WB
Species Reactivity	Hu Ms
Immunogen Type	Peptide-KLH
Target Name	VEGFR2
Alternative Names	FLK1; KDR; VGFR2; VGR2; kinase insert domain receptor

## Application Details

Predicted MW: 210 230kd

Western blotting: 1:1000

## Images



Western blot analysis of cell lysates using VEGFR2(Ab-1059) antibody(#21531) Lane 1 and 2: Huvec cell; Lane 3 HT29 cell)

## Descriptions

Immunogen	Peptide sequence around aa. 1057~1061 (P-D-Y-V-R) derived from Human VEGFR2.
Specificity	The antibody detects endogenous levels of total VEGFR2 protein.
Purification	Antibodies were produced by immunizing rabbits with synthetic peptide and KLH conjugates. Antibodies were purified by affinity-chromatography using epitope-specific peptide.
Formulation	Supplied at 1.0mg/mL in phosphate buffered saline (without Mg2+ and Ca2+), pH 7.4, 150mM NaCl, 0.02% sodium azide and 50% glycerol.
Storage	Store at -20°C for long term preservation (recommended). Store at 4°C for short term use.
Accession NO.	Swiss-Prot: P35968NCBI Protein: NP_002244.1

## Related Information

Receptor for VEGF or VEGFC. Has a tyrosine-protein kinase activity. The VEGF-kinase ligand/receptor signaling system plays a key role in vascular development and regulation of vascular permeability. In case of HIV-1 infection, the interaction with extracellular viral Tat protein seems to enhance angiogenesis in Kaposi's sarcoma lesions

Zeng H, et al. (2001) J Biol Chem. 276(35): 32714-32719.

Dougher M, et al. (1999) Oncogene. 18(8): 1619-1627.

---

Note: This product is for in vitro research use only and is not intended for use in humans or animals.