

PLCg1(Ab-771) Antibody

Catalog No: #21523



Package Size: #21523-1 50ul #21523-2 100ul #21523-4 25ul

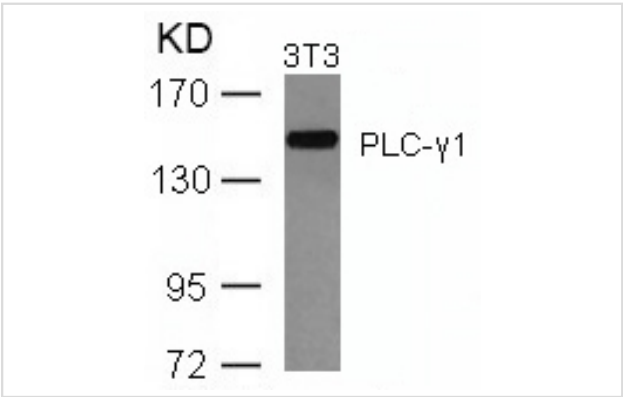
Overview

Product Name	PLCg1(Ab-771) Antibody
Host Species	Rabbit
Clonality	Polyclonal
Applications	WB IHC
Species Reactivity	Hu Ms Rt
Immunogen Type	Peptide-KLH
Target Name	PLCg1
Alternative Names	Phosphoinositide phospholipase C; Phospholipase C-gamma-1;

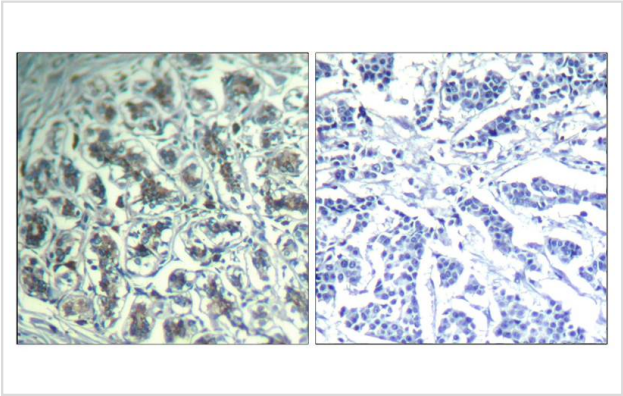
Application Details

Predicted MW: 155kd
Western blotting: 1:500~1:1000
Immunohistochemistry: 1:50~1:100

Images



Western blot analysis of extracts from 3T3 cells using PLC-g1(Ab-771) Antibody #21523.



Immunohistochemical analysis of paraffin-embedded human breast carcinoma tissue using PLC-g1(Ab-771) Antibody #21523(left) or the same antibody preincubated with blocking peptide(right).

Descriptions

Immunogen	Peptide sequence around aa. 769~773 (P-D-Y-G-A) derived from Human PLC-g1.
Specificity	The antibody detects endogenous level of total PLC-g1 protein.
Purification	Antibodies were produced by immunizing rabbits with synthetic peptide and KLH conjugates. Antibodies were purified by affinity-chromatography using epitope-specific peptide.
Formulation	Supplied at 1.0mg/mL in phosphate buffered saline (without Mg ²⁺ and Ca ²⁺), pH 7.4, 150mM NaCl, 0.02% sodium azide and 50% glycerol.
Storage	Store at -20°C for long term preservation (recommended). Store at 4°C for short term use.
Accession NO.	Swiss-Prot: P19174NCBI Protein: NP_002651.2

Related Information

PLC-gamma is a major substrate for heparin-binding growth factor 1 (acidic fibroblast growth factor)-activated tyrosine kinase.

Note: This product is for in vitro research use only and is not intended for use in humans or animals.