

eIF4B(Ab-422) Antibody

Catalog No: #21513



Package Size: #21513-1 50ul #21513-2 100ul #21513-4 25ul

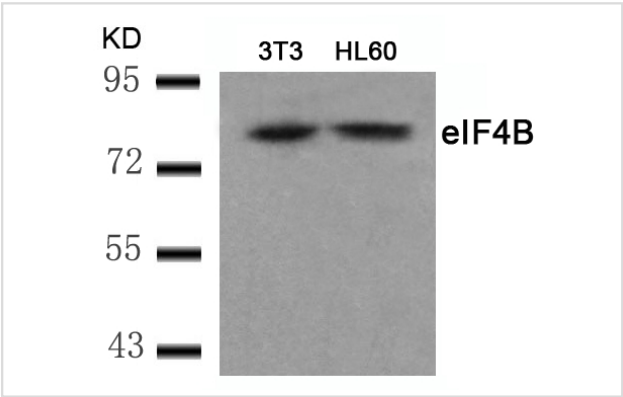
Overview

Product Name	eIF4B(Ab-422) Antibody
Host Species	Rabbit
Clonality	Polyclonal
Applications	WB IHC
Species Reactivity	Human Mouse
Immunogen Type	Peptide-KLH
Target Name	eIF4B

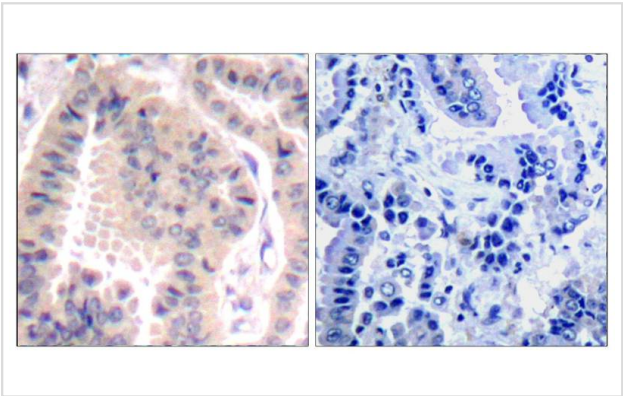
Application Details

Predicted MW: 80kd
Western blotting: 1:500~1:1000
Immunohistochemistry: 1:50~1:100

Images



Western blot analysis of extracts from 3T3 and HL60 cells using eIF4B(Ab-422) Antibody #21513.



Immunohistochemical analysis of paraffin-embedded human lung carcinoma tissue using eIF4B(Ab-422) Antibody #21513(left) or the same antibody preincubated with blocking peptide(right).

Descriptions

Immunogen	Peptide sequence around aa.420~424 (T-G-S-E-S) derived from Human eIF4B.
-----------	--

Specificity	The antibody detects endogenous level of total eIF4B protein.
Purification	Antibodies were produced by immunizing rabbits with synthetic peptide and KLH conjugates. Antibodies were purified by affinity-chromatography using epitope-specific peptide.
Formulation	Supplied at 1.0mg/mL in phosphate buffered saline (without Mg ²⁺ and Ca ²⁺), pH 7.4, 150mM NaCl, 0.02% sodium azide and 50% glycerol.
Storage	Store at -20°C for long term preservation (recommended). Store at 4°C for short term use.
Accession NO.	Swiss-Prot: P23588NCBI Protein: NP_001408.2

Related Information

Required for the binding of mRNA to ribosomes. Functions in close association with EIF4-F and EIF4-A. Binds near the 5'-terminal cap of mRNA in presence of EIF-4F and ATP. Promotes the ATPase activity and the ATP-dependent RNA unwinding activity of both EIF4-A and EIF4-F.

Gingras, A.C. et al. (2001) Genes Dev. 15, 807-826.

Duncan, R. and Hershey, J.W. (1985) J. Biol. Chem. 260, 5493-5497.

Duncan, R.F. and Hershey, J.W. (1989) J. Cell Biol. 109, 1467-1481.

Note: This product is for in vitro research use only and is not intended for use in humans or animals.