

ASH2L Antibody

Catalog No: #21497



Package Size: #21497-1 50ul #21497-2 100ul #21497-4 25ul

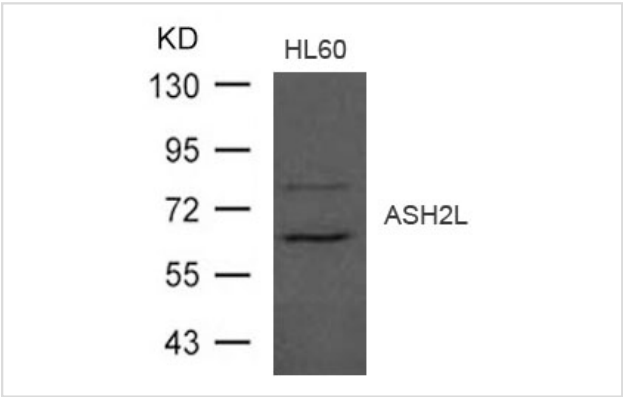
Overview

Product Name	ASH2L Antibody
Host Species	Rabbit
Clonality	Polyclonal
Applications	WB
Species Reactivity	Hu Ms Rt
Immunogen Type	Peptide-KLH
Target Name	ASH2L
Alternative Names	ASH2; Bre2; ASH2L1; ASH2L2;

Application Details

Predicted MW: 65 80kd
Western blotting: 1:500~1:1000

Images



Western blot analysis of extract from HL-60 cells using ASH2L Antibody #21497

Descriptions

Immunogen	Peptide sequence around aa.620~624(G-R-R-S-P) derived from Human ASH2L.
Specificity	The antibody detects endogenous level of total ASH2L protein.
Purification	Antibodies were produced by immunizing rabbits with synthetic peptide and KLH conjugates. Antibodies were purified by affinity-chromatography using epitope-specific peptide.
Formulation	Supplied at 1.0mg/mL in phosphate buffered saline (without Mg2+ and Ca2+), pH 7.4, 150mM NaCl, 0.02% sodium azide and 50% glycerol.
Storage	Store at -20°C for long term preservation (recommended). Store at 4°C for short term use.
Accession NO.	Swiss-Prot: Q9UBL3 NCBI Protein: NP_004665.2

Related Information

Component of the Set1/Ash2 histone methyltransferase (HMT) complex, a complex that specifically methylates 'Lys-4' of histone H3, but not if the neighboring 'Lys-9' residue is already methylated. As part of the MLL1/MLL complex it is involved in methylation and dimethylation at 'Lys-4' of histone H3. May function as a transcriptional regulator. May play a role in hematopoiesis.

Wysocka J., Myers M.P., Laherty C.D., Eisenman R.N., Herr W. *Genes Dev.* 17:896-911(2003)

Patel A., Dharmarajan V., Vought V.E., Cosgrove M.S.J. *Biol. Chem.* 284:24242-24256(2009)

Note: This product is for in vitro research use only and is not intended for use in humans or animals.