

GFAP Antibody

Catalog No: #21485



Package Size: #21485-1 50ul #21485-2 100ul #21485-4 25ul

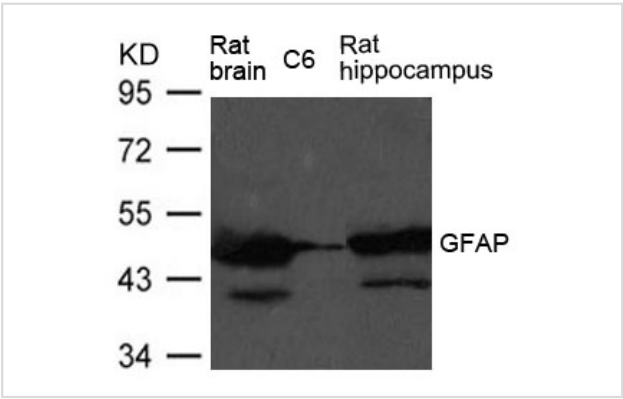
Overview

Product Name	GFAP Antibody
Host Species	Rabbit
Clonality	Polyclonal
Applications	WB IF
Species Reactivity	Hu Rt
Immunogen Type	Peptide-KLH
Target Name	GFAP
Alternative Names	FLJ45472

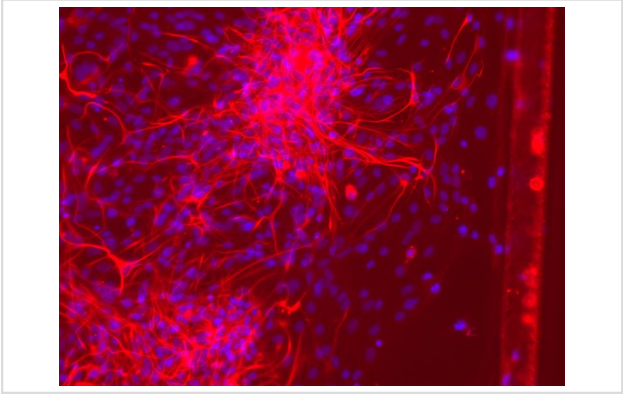
Application Details

Predicted MW: 50kd
Western blotting: 1:500~1:1000
Immunofluorescence: 1:100~1:200

Images



Western blot analysis of extract from Rat brain, Rat hippocampus tissue and C6 cells using GFAP Antibody #21485



Immunofluorescence staining of paraffin-embedded Glioma cells of Spinal Cord using GFAP Antibody #21485.

Descriptions

Immunogen	Peptide sequence around aa. 423~427 (E-S-K-Q-E) derived from Human GFAP.
Specificity	The antibody detects endogenous level of total GFAP protein.
Purification	Antibodies were produced by immunizing rabbits with synthetic peptide and KLH conjugates. Antibodies were purified by affinity-chromatography using epitope-specific peptide.
Formulation	Supplied at 1.0mg/mL in phosphate buffered saline (without Mg ²⁺ and Ca ²⁺), pH 7.4, 150mM NaCl, 0.02% sodium azide and 50% glycerol.
Storage	Store at -20°C for long term preservation (recommended). Store at 4°C for short term use.
Accession NO.	Swiss-Prot: P14136NCBI Protein: NP_002046.1

Related Information

GFAP, a class-III intermediate filament, is a cell-specific marker that, during the development of the central nervous system, distinguishes astrocytes from other glial cells.

Bongcam-Rudloff E., Nister M., Betsholtz C., Wang J.-L., Stenman G., Huebner K., Croce C.M., Westermarck B. *Cancer Res.* 51:1553-1560(1991)

Nielsen A.L., Holm I.E., Johansen M., Bonven B., Jorgensen P., Jorgensen A.L.J. *Biol. Chem.* 277:29983-29991(2002)

Note: This product is for in vitro research use only and is not intended for use in humans or animals.