

CDCP1(CD318) Antibody

Catalog No: #21479



Package Size: #21479-1 50ul #21479-2 100ul #21479-4 25ul

Overview

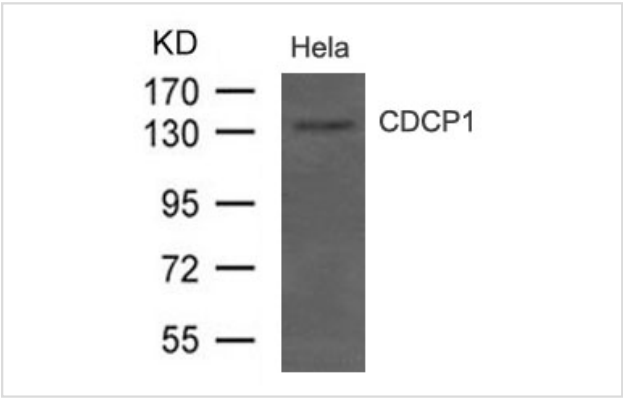
Product Name	CDCP1(CD318) Antibody
Host Species	Rabbit
Clonality	Polyclonal
Applications	WB
Species Reactivity	Hu
Immunogen Type	Peptide-KLH
Target Name	CDCP1(CD318)
Alternative Names	TRASK; SIMA135;

Application Details

Predicted MW: 140kd

Western blotting: 1:500

Images



Western blot analysis of extract from HeLa cells using CDCP1(CD318) Antibody #21479

Descriptions

Immunogen	Peptide sequence around aa.828~832(T-Q-E-P-M) derived from Human CDCP1(CD318).
Specificity	The antibody detects endogenous level of total CDCP1(CD318) protein.
Purification	Antibodies were produced by immunizing rabbits with synthetic peptide and KLH conjugates. Antibodies were purified by affinity-chromatography using epitope-specific peptide.
Formulation	Supplied at 1.0mg/mL in phosphate buffered saline (without Mg2+ and Ca2+), pH 7.4, 150mM NaCl, 0.02% sodium azide and 50% glycerol.
Storage	Store at -20°C for long term preservation (recommended). Store at 4°C for short term use.
Accession NO.	Swiss-Prot: Q9H5V8NCBI Protein: NP_073753.3

Related Information

May be involved in cell adhesion and cell matrix association. May play a role in the regulation of anchorage versus migration or proliferation versus differentiation via its phosphorylation. May be a novel marker for leukemia diagnosis and for immature hematopoietic stem cell subsets. Belongs to the tetraspanin web involved in tumor progression and metastasis.

Scherl-Mostageer M., Sommergruber W., Abseher R., Hauptmann R., Ambros P., Schweifer N.

Oncogene 20:4402-4408(2001)

Bhatt A.S., Erdjument-Bromage H., Tempst P., Craik C.S., Moasser M.M.Oncogene 24:5333-5343(2005)

Xia Y., Gil S.G., Carter W.G.J. Cell Biol. 132:727-740(1996)

Note: This product is for in vitro research use only and is not intended for use in humans or animals.