

ABCG2(CD338) Antibody

Catalog No: #21476



Package Size: #21476-1 50ul #21476-2 100ul #21476-4 25ul

Overview

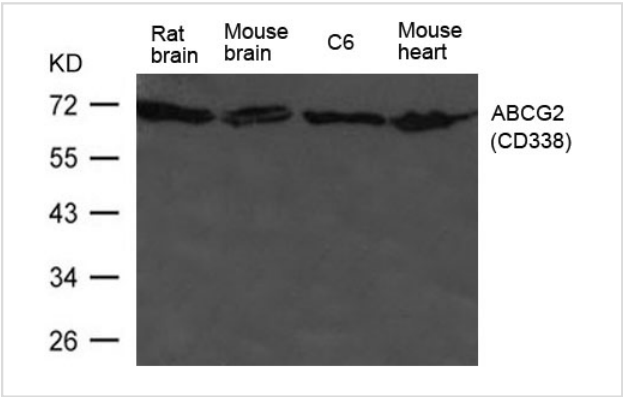
Product Name	ABCG2(CD338) Antibody
Host Species	Rabbit
Clonality	Polyclonal
Applications	WB
Species Reactivity	Human
Immunogen Type	Peptide-KLH
Target Name	ABCG2(CD338)
Alternative Names	BMDP; MRX; ABC15; ABCP; BCRP1

Application Details

Predicted MW: 65-80kd

Western blotting: 1:500

Images



Western blot analysis of extract from HL-60 cells using ABCG2(CD338) Antibody #21476

Descriptions

Immunogen	Peptide sequence around aa.160~164(R-I-N-R-V) derived from Human ABCG2(CD338).
Specificity	The antibody detects endogenous level of total ABCG2(CD338) protein.
Purification	Antibodies were produced by immunizing rabbits with synthetic peptide and KLH conjugates. Antibodies were purified by affinity-chromatography using epitope-specific peptide.
Formulation	Supplied at 1.0mg/mL in phosphate buffered saline (without Mg2+ and Ca2+), pH 7.4, 150mM NaCl, 0.02% sodium azide and 50% glycerol.
Storage	Store at -20°C for long term preservation (recommended). Store at 4°C for short term use.
Accession NO.	Swiss-Prot: Q9UNQ0NCBI Protein: NP_004818.2

Related Information

Xenobiotic transporter that may play an important role in the exclusion of xenobiotics from the brain. May be involved in brain-to-blood efflux. Appears to play a major role in the multidrug resistance phenotype of several cancer cell lines. When overexpressed, the transfected cells become resistant to mitoxantrone, daunorubicin and doxorubicin, display diminished intracellular accumulation of daunorubicin, and manifest an ATP-dependent increase in the efflux of rhodamine 123.

Henriksen U., Gether U., Litman T.J. Cell Sci. 118:1417-1426(2005) Wakabayashi K., Nakagawa H., Tamura A., Koshiba S., Hoshijima K., Komada M., Ishikawa T. J. Biol. Chem. 282:27841-27846(2007)

Note: This product is for in vitro research use only and is not intended for use in humans or animals.