

PRLR Antibody

Catalog No: #21457



Package Size: #21457-1 50ul #21457-2 100ul #21457-4 25ul

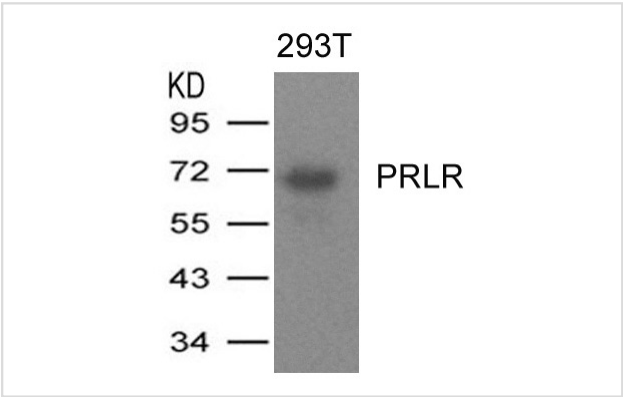
Overview

Product Name	PRLR Antibody
Host Species	Rabbit
Clonality	Polyclonal
Applications	WB
Species Reactivity	Hu
Immunogen Type	Peptide-KLH
Target Name	PRLR
Alternative Names	hPRLrI

Application Details

Predicted MW: 70kd
Western blotting: 1:500~1:1000

Images



Western blot analysis of extracts from 293T cells expressing human PRLR protein using PRLR Antibody #21457.

Descriptions

Immunogen	Peptide sequence around aa.25~29 (Q-L-P-P-G) derived from Human PRLR
Specificity	The antibody detects endogenous levels of total PRLR protein.
Purification	Antibodies were produced by immunizing rabbits with synthetic peptide and KLH conjugates. Antibodies were purified by affinity-chromatography using epitope-specific peptide.
Formulation	Supplied at 1.0mg/mL in phosphate buffered saline (without Mg2+ and Ca2+), pH 7.4, 150mM NaCl, 0.02% sodium azide and 50% glycerol.
Storage	Store at -20°C for long term preservation (recommended). Store at 4°C for short term use.
Accession NO.	Swiss-Prot: P16471NCBI Protein: NP_000940.1

## Related Information

This is a receptor for the anterior pituitary hormone prolactin (PRL). Isoform 4 is unable to transduce prolactin signaling. Isoform 6 is unable to transduce prolactin signaling

Boutin J.M,et al.Mol. Endocrinol. 3:1455-1461(1989)

Kline J.B,et al.J. Biol. Chem. 274:35461-35468(1999)

Hu Z.Z,et al.J. Clin. Endocrinol. Metab. 84:1153-1156(1999)

Note: This product is for in vitro research use only and is not intended for use in humans or animals.