

# MDM2 Antibody

Catalog No: #21436



Package Size: #21436-1 50ul #21436-2 100ul #21436-4 25ul

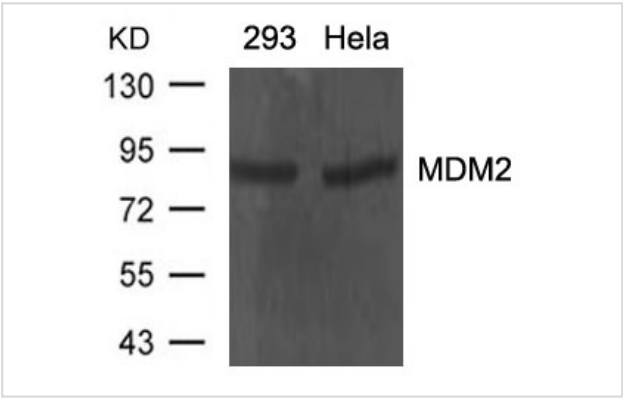
## Overview

Product Name	MDM2 Antibody
Host Species	Rabbit
Clonality	Polyclonal
Applications	WB
Species Reactivity	Hu
Immunogen Type	Peptide-KLH
Target Name	MDM2
Alternative Names	HDMX; hdm2;

## Application Details

Predicted MW: 90kd
Western blotting: 1:500~1:1000

## Images



Western blot analysis of extracts from 293 and HeLa cells using MDM2 Antibody #21436.

## Descriptions

Immunogen	Peptide sequence around aa.18~22(Q-I-P-A-S) derived from Human MDM2.
Specificity	The antibody detects endogenous levels of total MDM2 protein.
Purification	Antibodies were produced by immunizing rabbits with synthetic peptide and KLH conjugates. Antibodies were purified by affinity-chromatography using epitope-specific peptide.
Formulation	Supplied at 1.0mg/mL in phosphate buffered saline (without Mg2+ and Ca2+), pH 7.4, 150mM NaCl, 0.02% sodium azide and 50% glycerol.
Storage	Store at -20°C for long term preservation (recommended). Store at 4°C for short term use.
Accession NO.	Swiss-Prot: Q00987NCBI Protein: NP_002383.2

## Related Information

MDM2, a ubiquitin ligase for p53, plays a central role in regulation of the stability of p53 . Akt-mediated phosphorylation of MDM2 at Ser166 and Ser186 increases its interaction with p300, allowing MDM2-mediated ubiquitination and degradation of p53 . Phosphorylation of MDM2 also blocks its binding to p19ARF, increasing the degradation of p53 .

Haupt, Y. et al. (1997) Nature 387, 296-299.

Mayo, L.D. and Donner, D.B. (2001) Proc. Natl. Acad. Sci. USA 98, 11598-11603.

Zhou, B. P. et al. (2001) Nat. Cell Biol. 3, 973-981.

Grossman, S. R. et al. (1998) Mol. Cell 2, 405-415.

Note: This product is for in vitro research use only and is not intended for use in humans or animals.