

MEK1/2 Antibody

Catalog No: #21428



Package Size: #21428-1 50ul #21428-2 100ul #21428-4 25ul

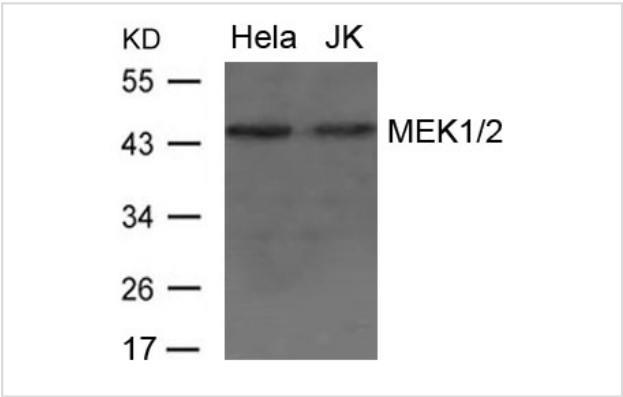
Overview

Product Name	MEK1/2 Antibody
Host Species	Rabbit
Clonality	Polyclonal
Applications	WB
Species Reactivity	Hu Ms Rt
Immunogen Type	Peptide-KLH
Target Name	MEK1/2
Alternative Names	MEK1; MKK1; MAPKK1; PRKMK1;

Application Details

Predicted MW: 45kd
Western blotting: 1:500~1:1000

Images



Western blot analysis of extract from HeLa and JK cells using MEK1/2 Antibody #21428

Descriptions

Immunogen	Peptide sequence around aa.235-239(L-Q-G-T-H) derived from Human MEK1/2.
Specificity	The antibody detects endogenous level of total MEK1/2 protein.
Purification	Antibodies were produced by immunizing rabbits with synthetic peptide and KLH conjugates. Antibodies were purified by affinity-chromatography using epitope-specific peptide.
Formulation	Supplied at 1.0mg/mL in phosphate buffered saline (without Mg2+ and Ca2+), pH 7.4, 150mM NaCl, 0.02% sodium azide and 50% glycerol.
Storage	Store at -20°C for long term preservation (recommended). Store at 4°C for short term use.
Accession NO.	Swiss-Prot: Q02750NCBI Protein: NP_002746.1

Related Information

Catalyzes the concomitant phosphorylation of a threonine and a tyrosine residue in a Thr-Glu-Tyr sequence located in MAP kinases. Activates ERK1 and ERK2 MAP kinases.

Seger R., Seger D., Lozeman F.J., Ahn N.G., Graves L.M., Campbell J.S., Ericsson L., Harrylock M., Jensen A.M., Krebs E.G.J. Biol. Chem. 267:25628-25631(1992)

Mukherjee S., Keitany G., Li Y., Wang Y., Ball H.L., Goldsmith E.J., Orth K. Science 312:1211-1214(2006)

Note: This product is for in vitro research use only and is not intended for use in humans or animals.