

Nanog Antibody

Catalog No: #21423



Package Size: #21423-1 50ul #21423-2 100ul #21423-4 25ul

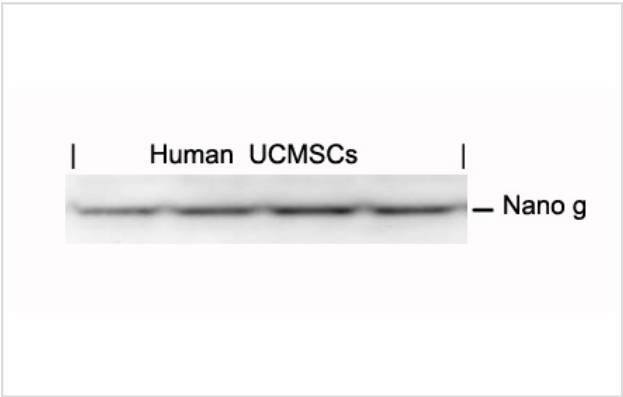
Overview

Product Name	Nanog Antibody
Host Species	Rabbit
Clonality	Polyclonal
Applications	WB
Species Reactivity	Hu Ms
Immunogen Type	Peptide-KLH
Target Name	Nanog
Alternative Names	Homeobox transcription factor Nanog

Application Details

Predicted MW: 42kd
Western blotting: 1:1000

Images



Western blot analysis of extracts from human Umbilical cord mesenchymal stem cell using Nano g Antibody #21423.

Descriptions

Immunogen	Peptide sequence around aa.137~141 (K-Q-V-K-T) derived from Nano g
Specificity	The antibody detects endogenous level of total Nanog protein.
Purification	Antibodies were produced by immunizing rabbits with synthetic peptide and KLH conjugates. Antibodies were purified by affinity-chromatography using epitope-specific peptide.
Formulation	Supplied at 1.0mg/mL in phosphate buffered saline (without Mg2+ and Ca2+), pH 7.4, 150mM NaCl, 0.02% sodium azide and 50% glycerol.
Storage	Store at -20°C for long term preservation (recommended). Store at 4°C for short term use.
Accession NO.	Swiss-Prot: Q9H9S0NCBI Protein: NP_079141.2

Related Information

Transcription regulator involved in inner cell mass and embryonic stem (ES) cells proliferation and self-renewal. Imposes pluripotency on ES cells and prevents their differentiation towards extraembryonic endoderm and trophoctoderm lineages. Blocks bone morphogenetic protein-induced mesoderm differentiation of ES cells by physically interacting with SMAD1 and interfering with the recruitment of coactivators to the active SMAD transcriptional complexes By similarity. Acts as a transcriptional activator or repressor By similarity. Binds optimally to the DNA consensus sequence 5'-TAAT[GT][GT]-3' or 5'-[CG][GA][CG]C[GC]ATTAN[GC]-3' By similarity. When overexpressed, promotes cells to enter into S phase and proliferation Do HJ, et al. *Biochem Biophys Res Commun*. 2007 Feb 16;353(3):770-5.

Boyer LA, et al. *Cell*. 2005 Sep 23;122(6):947-56.

Freberg CT, et al. *Mol Biol Cell*. 2007 May;18(5):1543-53.

Chambers I, et al. *Cell*. 2003 May 30;113(5):643-55.

Note: This product is for in vitro research use only and is not intended for use in humans or animals.