

Caspase 3 Antibody

Catalog No: #21420



Package Size: #21420-1 50ul #21420-2 100ul #21420-4 25ul

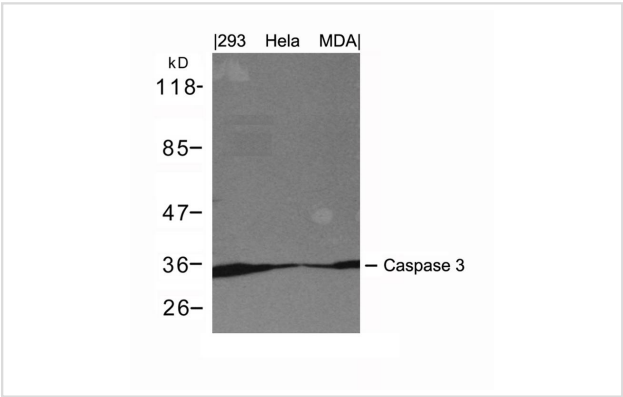
Overview

Product Name	Caspase 3 Antibody
Host Species	Rabbit
Clonality	Polyclonal
Applications	WB
Species Reactivity	Hu
Immunogen Type	Peptide-KLH
Target Name	Caspase 3
Alternative Names	Apopain

Application Details

Predicted MW: 35 17kd
Western blotting: 1:1000

Images



Western blot analysis of extracts from 293, HeLa and MDA cells using Caspase 3 Antibody #21420.

Descriptions

Immunogen	Peptide sequence around aa.29~33 (S-G-I-S-L) derived from Caspase 3.
Specificity	The antibody detects endogenous level of total Caspase 3 protein.
Purification	Antibodies were produced by immunizing rabbits with synthetic peptide and KLH conjugates. Antibodies were purified by affinity-chromatography using epitope-specific peptide.
Formulation	Supplied at 1.0mg/mL in phosphate buffered saline (without Mg2+ and Ca2+), pH 7.4, 150mM NaCl, 0.02% sodium azide and 50% glycerol.
Storage	Store at -20°C for long term preservation (recommended). Store at 4°C for short term use.
Accession NO.	Swiss-Prot: P42574NCBI Protein: NP_004337.2

Related Information

Involved in the activation cascade of caspases responsible for apoptosis execution. At the onset of apoptosis it proteolytically cleaves poly(ADP-ribose) polymerase (PARP) at a '216-Asp-|-Gly-217' bond. Cleaves and activates sterol regulatory element binding proteins (SREBPs) between the basic helix-loop-helix leucine zipper domain and the membrane attachment domain. Cleaves and activates caspase-6, -7 and -9. Involved in the cleavage of huntingtin.

Gervais, F. G et al. Cell 97: 395-406, 1999.

Nicholson, D. W. et al. (1995) Nature 376, 37-43.

Note: This product is for in vitro research use only and is not intended for use in humans or animals.