

Fas Antibody

Catalog No: #21419



Package Size: #21419-1 50ul #21419-2 100ul #21419-4 25ul

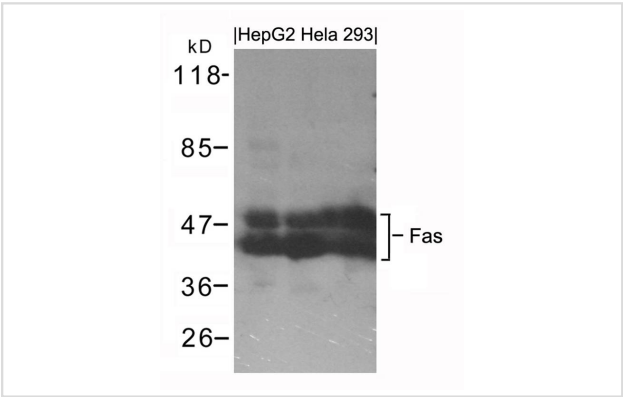
Overview

Product Name	Fas Antibody
Host Species	Rabbit
Clonality	Polyclonal
Applications	WB
Species Reactivity	Hu
Immunogen Type	Peptide-KLH
Target Name	Fas
Alternative Names	FASLG receptor; Apoptosis-mediating surface antigen FAS; Apo-1 antigen

Application Details

Predicted MW: 40-50kd
Western blotting: 1:1000

Images



Western blot analysis of extracts from HepG2, Hela and 293 cells using Fas Antibody #21419.

Descriptions

Immunogen	Peptide sequence around aa.323~327 (E-N-S-N-F) derived from human Fas .
Specificity	The antibody detects endogenous level of total Fas protein.
Purification	Antibodies were produced by immunizing rabbits with synthetic peptide and KLH conjugates. Antibodies were purified by affinity-chromatography using epitope-specific peptide.
Formulation	Supplied at 1.0mg/mL in phosphate buffered saline (without Mg2+ and Ca2+), pH 7.4, 150mM NaCl, 0.02% sodium azide and 50% glycerol.
Storage	Store at -20°C for long term preservation (recommended). Store at 4°C for short term use.
Accession NO.	Swiss-Prot: P25445NCBI Protein: NP_000034.1

Related Information

Receptor for TNFSF6/FASLG. The adapter molecule FADD recruits caspase-8 to the activated receptor. The resulting death-inducing signaling complex (DISC) performs caspase-8 proteolytic activation which initiates the subsequent cascade of caspases (aspartate-specific cysteine proteases) mediating apoptosis. FAS-mediated apoptosis may have a role in the induction of peripheral tolerance, in the antigen-stimulated suicide of mature T-cells, or both. The secreted isoforms 2 to 6 block apoptosis (in vitro).

Hahne, M. et al. (1995) *Int Immunol* 7, 1381-6.

Nagata, S. (1997) *Cell* 88, 355-65.

Green, D.R. and Ferguson, T.A. (2001) *Nat Rev Mol Cell Biol* 2, 917-24.

Note: This product is for in vitro research use only and is not intended for use in humans or animals.