

# LC3a Antibody

Catalog No: #21402



Package Size: #21402-1 50ul #21402-2 100ul #21402-4 25ul

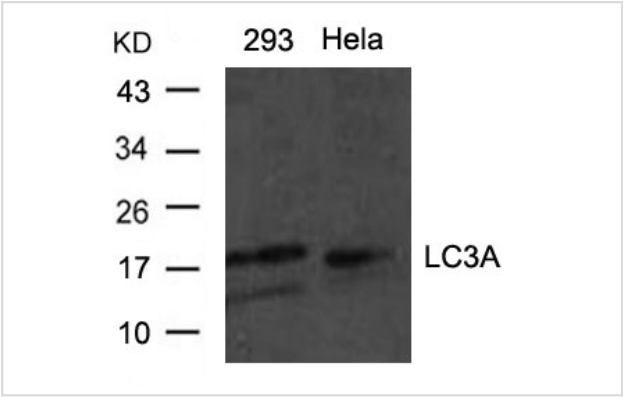
## Overview

Product Name	LC3a Antibody
Host Species	Rabbit
Clonality	Polyclonal
Applications	WB IF
Species Reactivity	Hu Ms Rt
Immunogen Type	Peptide-KLH
Target Name	LC3a
Alternative Names	Microtubule-associated protein 1 light chain 3 alpha; MAP1A/1B light chain 3 A; MAP1A/MAP1B LC3 A; MAP1 light chain 3-like protein 1; Autophagy-related protein LC3 A

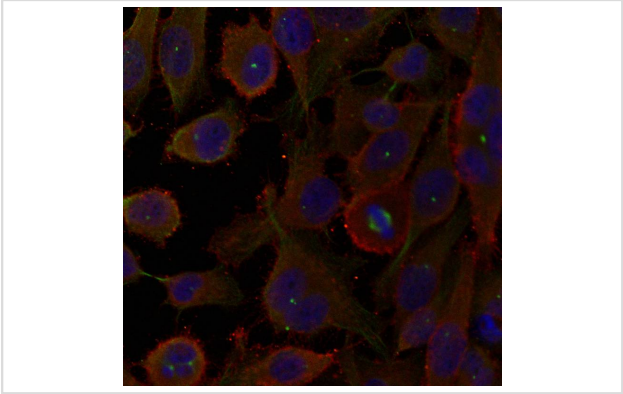
## Application Details

Predicted MW: 18 16 kd
Western blotting: 1:500~1:1000
Immunofluorescence: 1:100~1:200

## Images



Western blot analysis of extracts from HeLa and 293 cells using LC3A antibody #21402.



Immunofluorescence staining of methanol-fixed HeLa cells using LC3A antibody #21402.

## Descriptions

Immunogen	Peptide sequence around aa.5~10 (R-P-F-K-Q) derived from Human LC3A.
Specificity	The antibody detects endogenous level of total LC3A protein.
Purification	Antibodies were produced by immunizing rabbits with synthetic peptide and KLH conjugates. Antibodies were purified by affinity-chromatography using epitope-specific peptide.
Formulation	Supplied at 1.0mg/mL in phosphate buffered saline (without Mg <sup>2+</sup> and Ca <sup>2+</sup> ), pH 7.4, 150mM NaCl, 0.02% sodium azide and 50% glycerol.
Storage	Store at -20°C for long term preservation (recommended). Store at 4°C for short term use.
Accession NO.	Swiss-Prot: Q9H492NCBI Protein: NP_115903.1

## Related Information

Probably involved in formation of autophagosomal vacuoles (autophagosomes).

Note: This product is for in vitro research use only and is not intended for use in humans or animals.