

Niban Antibody

Catalog No: #21401



Package Size: #21401-1 50ul #21401-2 100ul #21401-4 25ul

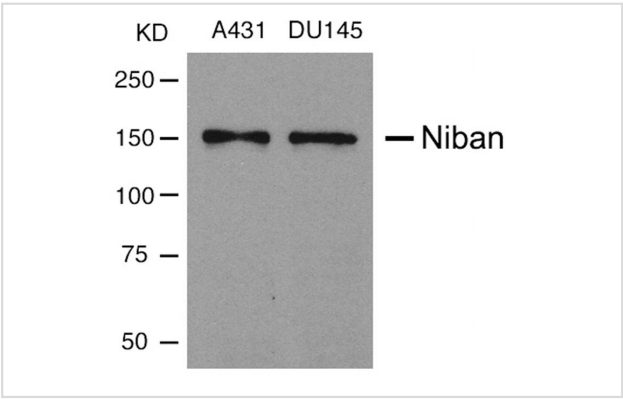
Overview

Product Name	Niban Antibody
Host Species	Rabbit
Clonality	Polyclonal
Applications	WB IF
Species Reactivity	Hu
Immunogen Type	Peptide-KLH
Target Name	Niban
Alternative Names	FAM129A

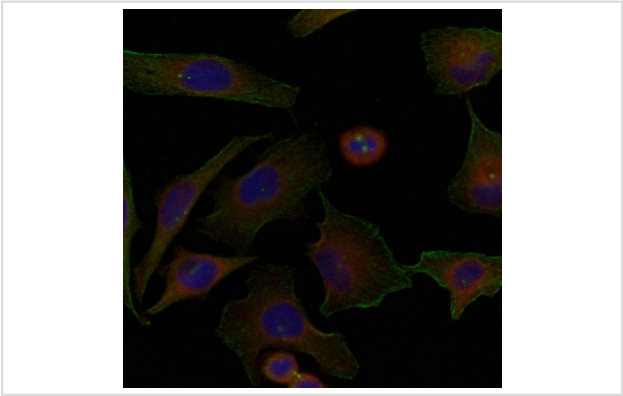
Application Details

Predicted MW: 150kd
Western blotting: 1:500~1:1000
Immunofluorescence: 1:100~1:200

Images



Western blot analysis of extracts from A431 and DU145 cells using Niban Antibody #21401.



Immunofluorescence staining of methanol-fixed Hela cells using Niban Antibody #21401.

Descriptions

Immunogen	peptide sequence around aa. 912~916 (K-E-G-E-G) derived from Human Niban.
Specificity	The antibody was affinity-purified from rabbit antiserum by affinity-chromatography using epitope-specific immunogen.
Purification	Antibodies were produced by immunizing rabbits with synthetic peptide and KLH conjugates. Antibodies were purified by affinity-chromatography using epitope-specific peptide.
Formulation	Supplied at 1.0mg/mL in phosphate buffered saline (without Mg ²⁺ and Ca ²⁺), pH 7.4, 150mM NaCl, 0.02% sodium azide and 50% glycerol.
Storage	Store at -20°C for long term preservation (recommended). Store at 4°C for short term use.
Accession NO.	Swiss-Prot: Q9BZQ8NCBI Protein: NP_443198.1

Related Information

Regulates phosphorylation of a number of proteins involved in translation regulation including EIF2A, EIF4EBP1 and RPS6KB1. May be involved in the endoplasmic reticulum stress response

Vill

Note: This product is for in vitro research use only and is not intended for use in humans or animals.