

LC3 antibody

Catalog No: #21400



Package Size: #21400-1 50ul #21400-2 100ul #21400-4 25ul

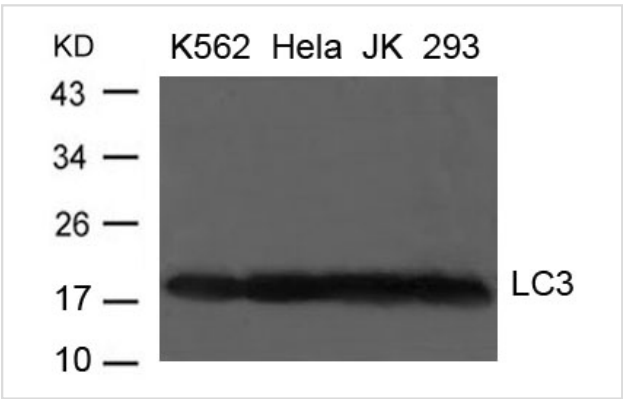
Overview

Product Name	LC3 antibody
Host Species	Rabbit
Clonality	Polyclonal
Applications	WB
Species Reactivity	Hu Ms Rt
Immunogen Type	Peptide-KLH
Target Name	LC3
Alternative Names	LC3A; ATG8E; MAP1ALC3; MAP1BLC3;

Application Details

Predicted MW: 19kd
Western blotting: 1:500~1:1000

Images



Western blot analysis of extract from K-562, Hela, JK and 293 cells using LC3 Antibody #21400

Descriptions

Immunogen	Peptide sequence around aa. 112-116(V-Y-A-S-Q) derived from Human LC3.
Specificity	The antibody detects endogenous level of total LC3 protein.
Purification	Antibodies were produced by immunizing rabbits with synthetic peptide and KLH conjugates. Antibodies were purified by affinity-chromatography using epitope-specific peptide.
Formulation	Supplied at 1.0mg/mL in phosphate buffered saline (without Mg2+ and Ca2+), pH 7.4, 150mM NaCl, 0.02% sodium azide and 50% glycerol.
Storage	Store at -20°C for long term preservation (recommended). Store at 4°C for short term use.
Accession NO.	Swiss-Prot: Q9H492NCBI Protein: NP_115903.1

## Related Information

---

Probably involved in formation of autophagosomal vacuoles (autophagosomes).

---

Note: This product is for in vitro research use only and is not intended for use in humans or animals.